

new products



Visit our online catalog at carlislefsp.com

CARLISLE
FOODSERVICE PRODUCTS

MAY 2013

Genuine Coca-Cola® Tumbler

- Classic shape with the appearance of glass
- Dishwasher safe; stackable
- Available in clear with Coca-Cola® logo
- BPA free
- Made of break-resistant SAN



439945200

This item is Trademarked by the Coca-Cola® Company. Coca-Cola® Tumblers are available for distribution only to authorized Coca-Cola® fountain customers for commercial foodservice use. Coca-Cola® Tumblers cannot be used for retail sale to the public.



Alibi™ Stemware

- Stemware is shatterproof polycarbonate
- Great for outdoor & poolside service
- Thick base & thin stem mimics traditional glassware
- Can be decorated, contact your local Carlisle Sales Representative or your Customer Service Representative for more information
- Dishwasher Safe

truebasics™ Trays

- Rubber liner is permanently bonded to the tray which prevents slipping and sliding of glass and dinnerware
- Rubber liner covers tray top and side wall to provide extra grip



TB1400
TB1600

TB25000



Prod No	Description	Glass Rack	Color	Pack	Cs Wt/Cube	List Price
Genuine Coca-Cola Tumbler						
439945200	24 oz Coca-Cola Tumbler with Logo	RW20-2	—	72 ea	22.00/2.56	3.78 ea
Alibi Stemware						
5643	11 oz Alibi White Wine	RG16-4	07	24 ea	4.20/1.50	7.96 ea
5644	6 oz Alibi Champagne Flute	RG25-4	07	24 ea	5.10/1.20	6.76 ea
5646	9 oz Alibi Martini	RG9-3	07	24 ea	4.64/0.94	6.76 ea
truebasic Trays						
TB1400	14" Round Tray	—	004, 076	12 ea	16.00/0.52	8.18 ea
TB1600	16" Round Tray	—	004, 076	12 ea	25.00/0.75	11.44 ea
TB2500	25" x 19.25" Oval Tray	—	004, 076	12 ea	24.00/1.64	34.33 ea
TB2700	27" x 22.25" Oval Tray	—	004, 076	12 ea	28.00/2.26	37.58 ea
TB2900	29" x 23.5" Oval Tray	—	004, 076	12 ea	33.00/2.86	47.42 ea

NSF Listed products are designated with a Δ

Room Service Trays – Available for Both Healthcare & FoodService Customers

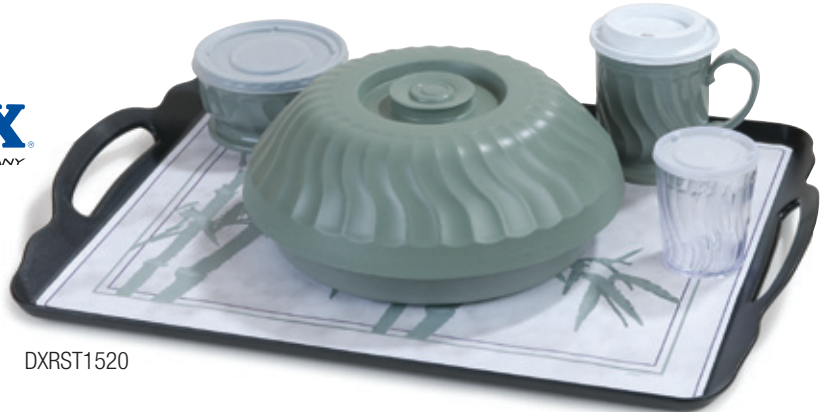
- 15" x 20" handled room service trays give an upscale dining experience
- Low rimmed edge keeps tray top items in place
- NSF Listed and dishwasher safe
- Available with both a standard and non-skid surface*

Special Healthcare Features:

- Low profile for patient comfort and ease of dining
- Non-skid trays eliminate traycovers making them a green alternative
- Compatible with same equipment as standard 15" x 20" trays
- Use with B size traycovers, see DineX catalog for a listing of available options

*Non-skid trays available early 3rd quarter

DINEX
A CARLISLE COMPANY



DXRST1520



CARLISLE
FOODSERVICE PRODUCTS



RST1520NS

Non-skid trays help minimize spills



Black(03)

Prod No	Description	Color	Pack	Cs Wt/Cube	List Price
FoodService Room Service Trays					
RST1520 Δ	15" x 20" Low Profile Room Service Tray	03	12 ea	27.75/1.80	33.34 ea
RST1520NS Δ	15" x 20" Non-Skid* Low Profile Room Service Tray	03	12 ea	27.75/1.80	44.45 ea

Prod No	Description	Color	Pack	Cs Wt/Cube	List Price
Dinex Room Service Trays					
DXRST1520 Δ	15" x 20" Low Profile Room Service Tray	03	12 ea	27.75/1.80	360.00 cs
DXRST1520NS Δ	15" x 20" Non-Skid* Low Profile Room Service Tray	03	12 ea	27.75/1.80	480.00 cs

NSF Listed products are designated with a Δ

CARLISLE
FOODSERVICE PRODUCTS



Carlisle Food Pans

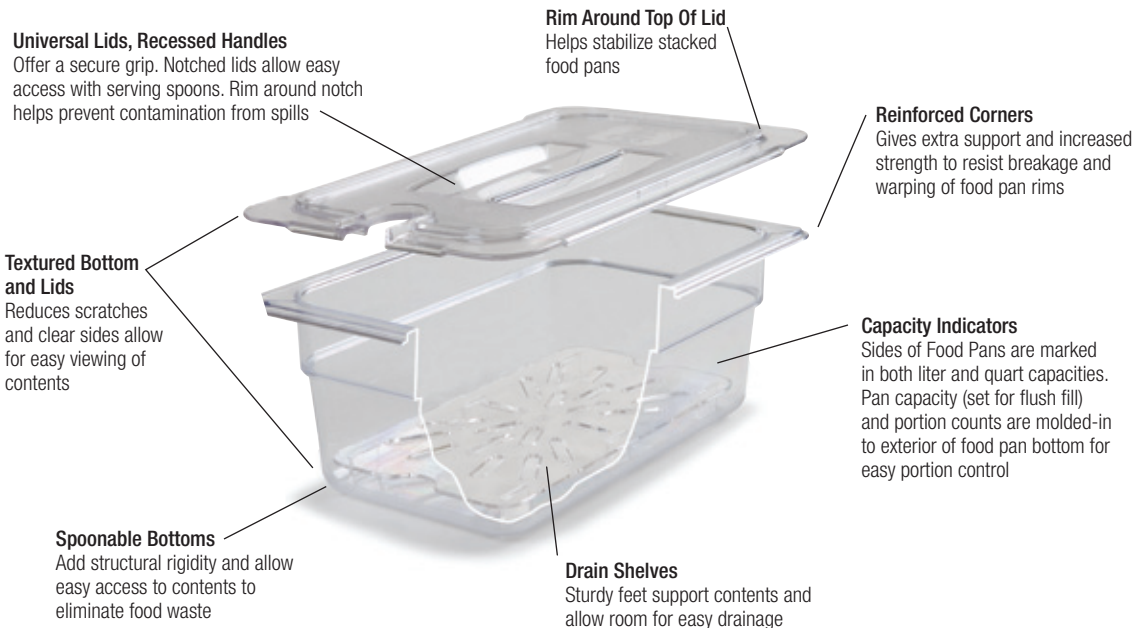
- Reinforced top and bottom corners on both pan and lid helps prevent chipping and cracking
- Spoonable bottoms makes removal of contents easier and helps prevent food waste
- Molded-in capacity indicators are listed in both quarts and liters
- Textured non-slip finish on corners, sides, bottom and lid reduce scratches
- Smooth interior finish makes clean-up easy
- Polycarbonate containers can withstand temperatures from -40°F to 212°F
- High-heat pans excel in high temperature applications and are BPA Free (-40°F to 375°F)
- Food Pan sizes meet specifications for use in food bars and steam tables
- Pans meet EN 631-1 Euro Norm standards for inter-stacking with existing pans
- NSF Listed; dishwasher safe
- See our online catalog for optional Food Pan Lids



Smart Lid's unique inside seal design provides superior leak-resistance; protects against spills

Smart Lids™

- Unique inside seal design provides superior leak-resistance and keeps your foods fresher, longer
- Perfect for transporting foods to offsite locations
- Polyethylene material is dishwasher safe; for use in -40°F to 180°F



Polycarbonate Food Pans



High Heat Food Pans



Prod No	Description	Pack	Cs Wt/ Cube	List Price
Full-Size – 20.75" x 12.75"				
10200B Δ	Pan – 2.5" (7.6 qt)	6 ea	10.70/1.16	26.69 ea
10201B Δ	Pan – 4" (12.7 qt)	6 ea	14.30/1.84	34.22 ea
10202B Δ	Pan – 6" (19.4 qt)	6 ea	17.60/2.41	46.51 ea
10203B Δ	Pan – 8" (25.9 qt)	6 ea	19.50/3.42	49.49 ea
10215 Δ	Drain Shelf	6 ea	6.15/0.34	19.53 ea
10212B*	Smart Lid	6 ea	7.00/0.59	13.69 ea
One-Half Size – 12.75" x 10.38"				
10220B Δ	Pan – 2.5" (3.6 qt)	6 ea	5.65/0.56	15.36 ea
10221B Δ	Pan – 4" (5.6 qt)	6 ea	7.60/0.89	18.51 ea
10222B Δ	Pan – 6" (8.7 qt)	6 ea	9.50/1.27	23.80 ea
10223B Δ	Pan – 8" (11.4 qt)	6 ea	11.45/1.50	31.09 ea
10235 Δ	Drain Shelf	6 ea	2.60/0.23	9.02 ea
10232B*	Smart Lid	6 ea	3.50/0.30	9.20 ea
One-Half Long Size – 20.75" x 6.25"				
10240B Δ	Pan – 2.5" (2.9 qt)	6 ea	6.25/0.60	20.33 ea
10241B Δ	Pan – 4" (5.1 qt)	6 ea	7.95/0.94	25.24 ea
One-Third Size – 12.75" x 7"				
30660 Δ	Pan – 2.5" (2.4 qt)	6 ea	4.45/0.46	11.20 ea
30661 Δ	Pan – 4" (3.8 qt)	6 ea	5.95/0.73	15.36 ea
30662 Δ	Pan – 6" (5.7 qt)	6 ea	7.15/0.88	17.98 ea
10269 Δ	Pan – 8" (7.3 qt)	6 ea	4.35/0.88	19.64 ea
30670 Δ	Drain Shelf	6 ea	1.40/0.12	8.29 ea
One-Quarter Size – 10.25" x 6.38"				
30680 Δ	Pan – 2.5" (1.7 qt)	6 ea	3.65/0.36	11.31 ea
30681 Δ	Pan – 4" (2.8 qt)	6 ea	4.65/0.55	13.31 ea
30682 Δ	Pan – 6" (4.0 qt)	6 ea	6.10/0.69	15.36 ea
30695 Δ	Drain Shelf	6 ea	1.00/0.08	7.16 ea
One-Sixth Size – 6.75" x 6.38"				
10300 Δ	Pan – 2.5" (1.1 qt)	6 ea	2.35/0.26	8.18 ea
30684 Δ	Pan – 4" (1.7 qt)	6 ea	3.10/0.35	9.20 ea
30685 Δ	Pan – 6" (2.5 qt)	6 ea	3.80/0.45	12.51 ea
30689 Δ	Drain Shelf	6 ea	1.00/0.42	3.20 ea
One-Ninth Size – 6.75" x 4.25"				
30686 Δ	Pan – 2.5" (0.7 qt)	6 ea	1.85/0.18	8.29 ea
30687 Δ	Pan – 4" (1.0 qt)	6 ea	2.30/0.22	10.16 ea
10335 Δ	Drain Shelf	6 ea	0.80/0.42	2.42 ea

NSF Listed products are designated with a Δ

*Smart Lids available in Blue(14)

Prod No	Description	Pack	Cs Wt/ Cube	List Price
Full-Size – 20.75" x 12.75"				
10400B Δ	Pan – 2.5" (7.6 qt)	6 ea	11.05/1.16	68.78 ea
10401B Δ	Pan – 4" (12.7 qt)	6 ea	15.00/1.84	89.53 ea
10402B Δ	Pan – 6" (19.4 qt)	6 ea	18.30/2.41	129.69 ea
10415 Δ	Drain Shelf	6 ea	6.36/0.34	45.13 ea
10212B*	Smart Lid	6 ea	7.00/0.59	13.69 ea
One-Half Size – 12.75" x 10.38"				
10420B Δ	Pan – 2.5" (3.6 qt)	6 ea	5.90/0.57	38.13 ea
10421B Δ	Pan – 4" (5.6 qt)	6 ea	8.00/0.89	47.36 ea
10422B Δ	Pan – 6" (8.7 qt)	6 ea	9.95/1.27	63.82 ea
10423B Δ	Pan – 8" (11.4 qt)	6 ea	13.25/1.50	74.38 ea
10435 Δ	Drain Shelf	6 ea	2.75/0.23	20.40 ea
10232B*	Smart Lid	6 ea	3.50/0.30	9.20 ea
One-Half Long Size – 20.75" x 6.25"				
10440B Δ	Pan – 2.5" (2.9 qt)	6 ea	6.90/0.60	48.82 ea
10441B Δ	Pan – 4" (5.1 qt)	6 ea	7.15/0.94	60.60 ea
One-Third Size – 12.75" x 7"				
30860 Δ	Pan – 2.5" (2.4 qt)	6 ea	4.65/0.46	28.71 ea
30861 Δ	Pan – 4" (3.8 qt)	6 ea	5.95/0.73	37.09 ea
30862 Δ	Pan – 6" (5.7 qt)	6 ea	7.50/0.89	50.60 ea
10469 Δ	Pan – 8" (7.3 qt)	6 ea	4.35/0.88	68.67 ea
30770 Δ	Drain Shelf	6 ea	1.44/0.12	15.29 ea
One-Quarter Size – 10.25" x 6.38"				
30880 Δ	Pan – 2.5" (1.7 qt)	6 ea	3.80/0.36	24.78 ea
30881 Δ	Pan – 4" (2.8 qt)	6 ea	4.75/0.55	30.60 ea
30882 Δ	Pan – 6" (4.0 qt)	6 ea	6.10/0.69	39.13 ea
10495 Δ	Drain Shelf	6 ea	1.05/0.08	15.18 ea
One-Sixth Size – 6.75" x 6.38"				
10500 Δ	Pan – 2.5" (1.1 qt)	6 ea	2.31/0.26	19.29 ea
30884 Δ	Pan – 4" (1.7 qt)	6 ea	3.25/0.40	23.31 ea
30885 Δ	Pan – 6" (2.5 qt)	6 ea	4.05/0.45	28.47 ea
10515 Δ	Drain Shelf	6 ea	1.00/0.11	7.00 ea
One-Ninth Size – 6.75" x 4.25"				
30886 Δ	Pan – 2.5" (0.7 qt)	6 ea	1.95/0.20	14.49 ea
30887 Δ	Pan – 4" (1.0 qt)	6 ea	2.45/0.26	16.96 ea
10535 Δ	Drain Shelf	6 ea	0.80/0.42	4.80 ea

See our catalog or visit us online at www.carlislefsp.com for a complete Food Pan & Lid product listing.

Cateraide™ IT

Carlisle brings you the best in temperature retention products with their redesigned Cateraide IT – insulated transport line. The Cateraide’s sturdy construction offers a long-lasting product and their thick foam insulation holds temperatures in the safe zone for over 6 hours. Available in Black, Tan or Olive.

Features include:

- Cateraide IT line is made in the USA with durable construction and reinforced corners
- Commercial foam insulation for superior food quality and safety
- NSF Listed
- Button-hole latch design offers convenient one hand operation and keeps the doors and lids closed tightly for better temperature retention
- Latches are field adjustable to insure a secure seal for the life of the carrier
- Easily identify contents using the integrated writing surface
- Units feature secure stacking for easy transport and storage
- Beverage dispenser has “spring action” faucet for no drip service
- End loader and top loader have built-in seal to eliminate gaskets
- End loader and top loader have a flat top that can be used as a prep surface when space is limited
- End loader and beverage dispensers have extra wide, sure-grip handles to promote a safe, stable two-person lift for easy loading, unloading
- End loader’s exclusive double hinge opens 270° for easy loading and unloading and lies flat to save space
- Low profile hinge takes up less space and is less likely to catch or break

End Loader Options:

- Pre-drilled holes make it easy to add wheels to your end loader
- 5" non-marking casters (2 locking) for smooth transport



Flat top design can be used as a prep surface when space is limited



Button-hole latch design offers convenient one hand operation



Exclusive double hinge opens 270°



Black(03)



Tan(25)



Olive(62)

Prod No	Description	Color	Pack	Cs Wt/Cube	List Price
Cateraide IT					
IT400 Δ	End Loader (six pan capacity)	03, 25, 62	1 ea	39.00/8.72	570.00
IT140 Δ	4" Top Loader (holds one full size pan up to 4" deep)	03, 25, 62	1 ea	20.00/22.38	350.00
IT500 Δ	5 gal Beverage Dispenser	03, 25, 62	1 ea	22.00/2.92	270.00
MYCK	Optional Caster Set	—	1 ea	10.00/0.79	102.04

NSF Listed products are designated with a Δ

SpillEater™

- The natural spill absorbent is up to 58% faster than all other absorbents
- SpillEater is environmentally friendly and naturally biodegrades petroleum oils
- Safe to use, leaves no slippery residue, and suppresses flammable fumes and odors
- EPA compliant and USDA certified biobased product
- Available in 2 lb carton or 20 lb pail
- Wall Mount Spill Station Kit (46303) is perfect for restaurants and kitchens; includes a wall mount rack with two 2 lb SpillEater cartons and a dust pan/broom
- Portable Spill Station Kit (46304) for quick clean ups; includes a rolling spill station, two cartons of SpillEater, dust pan and squeegee-broom



46300

46301



46304



46303

Square Steri- & Suds-Pail®

- 3, 6 and 8 quart Pails meet board of health & HACCP guidelines for dedicated containers
- Use red Steri-Pails for sanitizing solutions, green Suds-Pails for cleaning solutions
- Pails have both standard and metric measurements on the interior walls
- Helper handles for better control
- Instructions for mixing and using sanitizing solutions is printed on the pails in English, Spanish and French
- Made of sturdy, dishwasher safe plastic



11833

11828

11832



Standard(00)



Red(05)



Green(09)

Prod No	Description	Color	Pack	Cs Wt/Cube	List Price
SpillEater Absorber					
46300	2 lb Carton	00	12 ea	24.00/1.11	11.00 ea
46301	20 lb Pail	00	1 ea	20.00/1.09	105.00 ea
46302	4 ft Sock	00	6 ea	11.00/2.60	19.20 ea
46303	Wall Mount Spill Station Kit (includes Rack, 2 Cartons 46300, Dust Pan/Broom)	00	1 ea	8.50/1.17	90.00 ea
46304	Portable Spill Station Kit (includes Rolling Station, 2 Cartons 46300, Dust Pan and Squeegee-Broom)	00	1 ea	5.50/2.26	300.00 ea
Square Steri- & Suds-Pails					
11828	3 qt Square Steri-Pail	05	12 ea	4.47/1.31	4.62 ea
11829	6 qt Square Steri-Pail	05	12 ea	7.25/2.24	6.00 ea
11830	8 qt Square Steri-Pail	05	12 ea	12.63/3.03	8.40 ea
11831	3 qt Square Suds-Pail	09	12 ea	4.47/1.31	4.62 ea
11832	6 qt Square Suds-Pail	09	12 ea	7.25/2.24	6.00 ea
11833	8 qt Square Suds-Pail	09	12 ea	12.63/3.03	8.40 ea

truebasics™ Aluminum Fry Pans

- 3003 aluminum for superior thermal conductivity
- Available in both satin finish as well as Quantum non-stick coating
- Fry pans come with removable/replaceable sleeves
- Dishwasher safe



Oil Bottle & Sprayer

- 16oz capacity to keep oil fresh
- Amber color protects light sensitive oils
- Value alternative to aerosol cans of oil
- Pre labeled to insure segregation from cleaning bottles
- Thread is compatible with standard sprayers

Sprayer (sold separately)

- Uniform spray density for even oil distribution
- Adjustable from spray to mist
- Metered application reduces food waste and improves consistency



Standard(00)



Amber(13)

Prod No	Description	Color	Pack	Cs Wt/Cube	List Price
Satin Finish Fry Pans					
TB61007	7" Fry Pan - Satin Finish	—	6 ea	7.00/0.38	13.33 ea
TB61008	8" Fry Pan - Satin Finish	—	6 ea	8.55/0.59	17.41 ea
TB61010	10" Fry Pan - Satin Finish	—	6 ea	13.67/0.90	24.07 ea
TB61012	12" Fry Pan - Satin Finish	—	6 ea	20.50/1.37	34.44 ea
TB61014	14" Fry Pan - Satin Finish	—	6 ea	28.15/2.04	45.56 ea
Non-Stick Finish Fry Pans					
TB61007NS	7" Fry Pan - Non Stick	—	6 ea	7.00/0.38	14.81 ea
TB61008NS	8" Fry Pan - Non Stick	—	6 ea	8.55/0.59	20.37 ea
TB61010NS	10" Fry Pan - Non Stick	—	6 ea	13.67/0.90	29.63 ea
TB61012NS	12" Fry Pan - Non Stick	—	6 ea	20.50/1.37	42.22 ea
TB61014NS	14" Fry Pan - Non Stick	—	6 ea	28.15/2.04	57.41 ea
Replacement Sleeves					
TB61RS-1	7" - 8" Replacement Sleeve	—	120 ea	11.00/0.49	5.22 ea
TB61RS-2	10" Replacement Sleeve	—	120 ea	14.00/0.56	6.58 ea
TB61RS-3	12" - 14" Replacement Sleeve	—	120 ea	20.00/0.89	9.40 ea
Oil Bottle & Sprayer					
3816	16 oz Amber Bottle with Label	13	12 ea	1.65/0.49	7.91 ea
3817	Trigger Sprayer	00	12 ea	1.15/0.12	3.53 ea



www.carlislefsp.com



Street Address: 4711 E Hefner Rd, Oklahoma City, OK 73131

Toll Free: 800.654.8210 Toll Free Fax: 800.872.4701

Phone: 405.475.5600 • www.carlislefsp.com

Printed in USA • © 2013 Carlisle FoodService Products • LNPBMAY13

The specifications and prices listed in this document are subject to change. Carlisle does not assume responsibility for typographical errors.