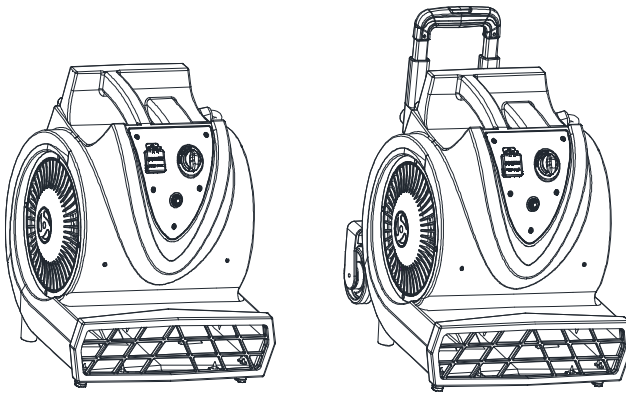




OWNER'S MANUAL

MODEL: PUMA X 3-SPEED AIR MOVER



shown with optional transport kit

FOR YOUR CONVENIENCE, RECORD THE FOLLOWING
IMPORTANT INFORMATION

MODEL: _____

SERIAL NUMBER: _____

DATE PURCHASED: _____

PURCHASED FROM: _____

PUMA X 3-SPEED AIR MOVER

Table of Contents

Machine Illustrations (Figures 1 – 3).....	Pages 2 -3
Exploded Parts Diagram (Figure 4).....	Page 4
Parts List (Figure 5).....	Page 5
Wiring Diagram (Figure 6).....	Page 5
Specifications (Figure 7).....	Page 5
Safety Precautions.....	Page 6
Operating Instructions.....	Pages 7 – 8

Warranty Information

Please contact your Triple S Distributor for a copy of the current warranty for this machine.

FIGURE 1

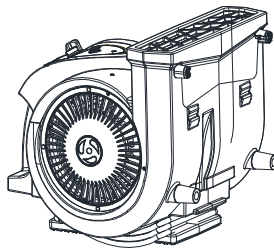
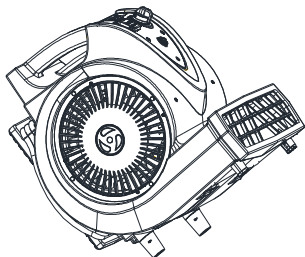
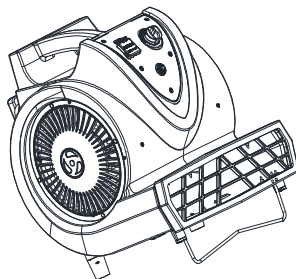
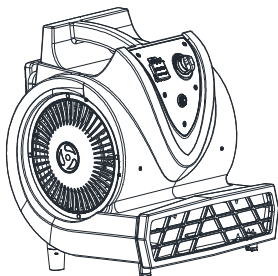


FIGURE 2

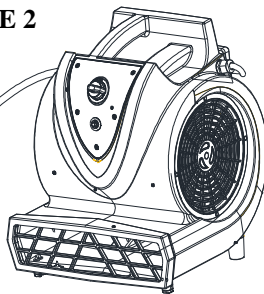
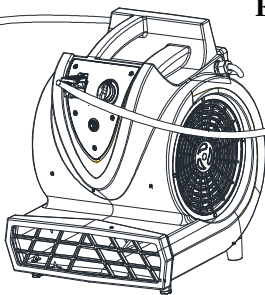
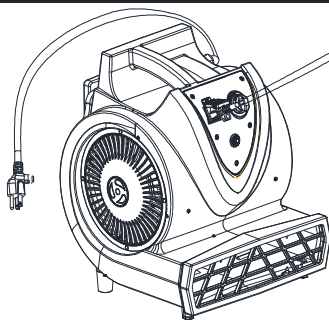


FIGURE 3

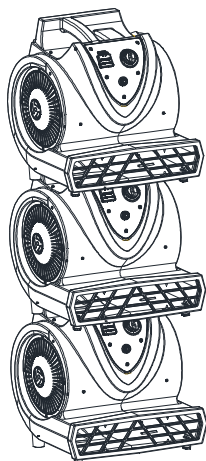
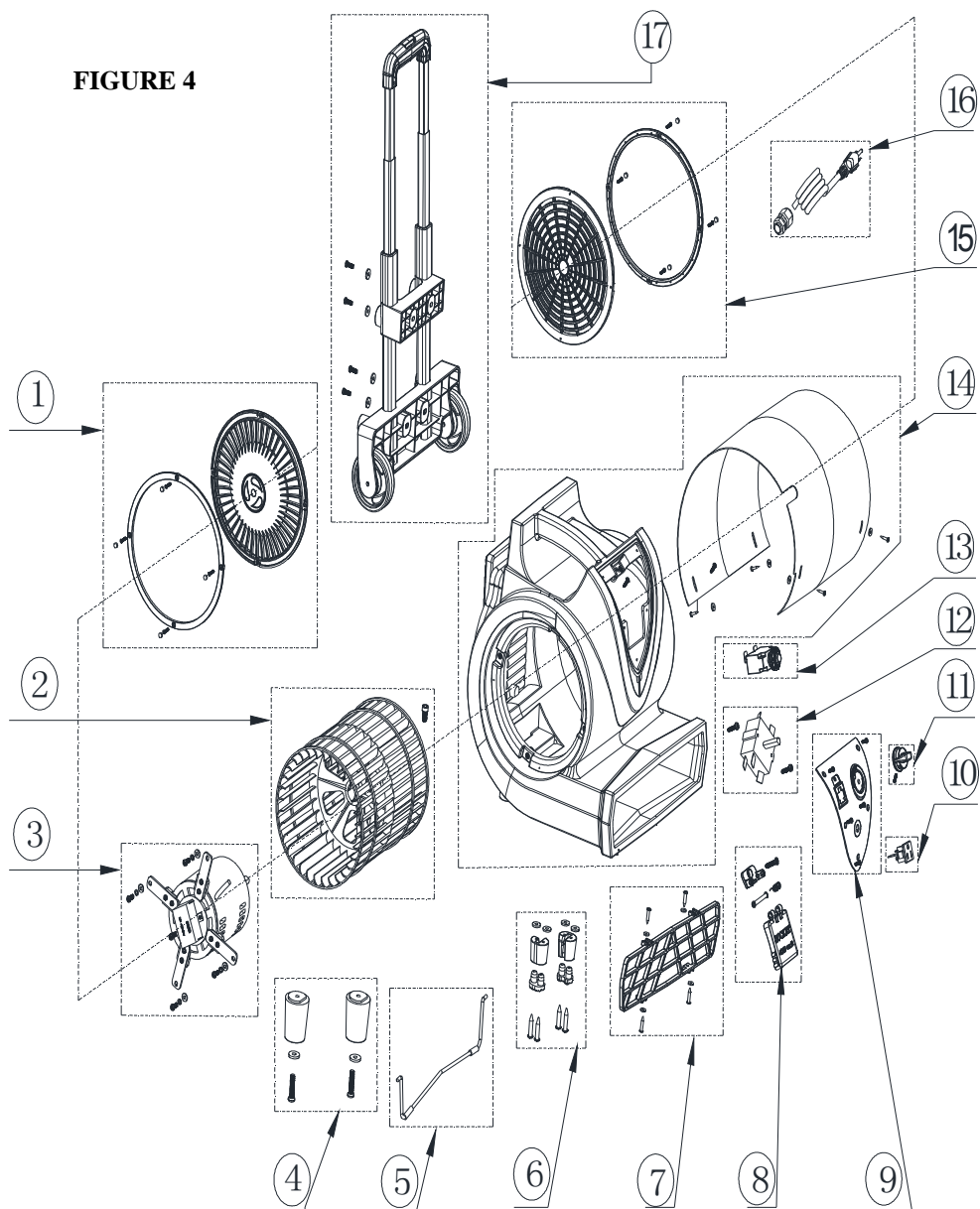
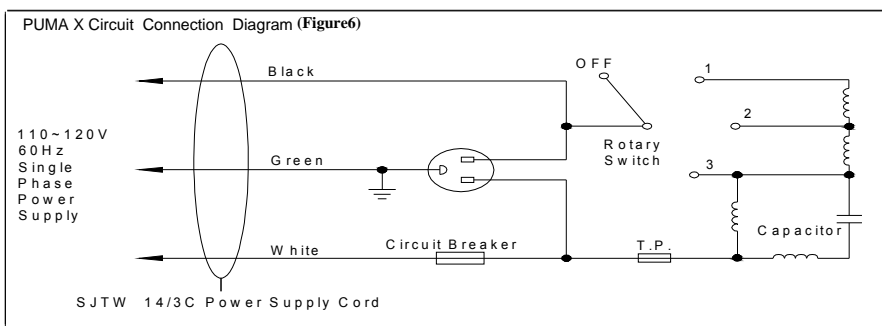


FIGURE 4

PUMA X PART LIST		FIGURE 5	
DIA NO	PART NUMBER	PART DISCRIPTION	QTY
1	VV78200	MOTOR SIDE VENT COVER KIT	1
2	VV78106	FAN WHEEL KIT	1
3	VV78201	120V MOTOR ASSEMBLY KIT	1
4	VV78202	REAR RUBBER FOOT KIT	1
5	VV78203	KICK STAND	1
6	VV78204	FRONT SUPPORTING FOOT KIT	1
7	VV78205	FRONT OUTLET VENT KIT	1
8	VV78206	WATERPROOF COVER KIT	1
9	VV78207	CONTROL PLATE KIT	1
10	VV78014	SOCKET	1
11	VV78210	3 SPEED CONTROL KNOB KIT	1
12	VV78211	3 SPPEd SWITCH	1
13	VV78019	CIRCUIT BREAKER	1
14	VV78212	OUTER HOUSING KIT	1
15	VV78213	FAN WHEEL SIDE VENT COVER KIT	1
16	VV78214	US POWER CORD	1
17	VV78406	TRANSPORT KIT (OPTIONAL PART)	1

Wiring Diagram



1/3HP Air Blower Specification (Figure 7)

Model No.	Voltage (V)	Frequency (Hz)	Power (W)	Amp Draw (L/M/H) A	Sound Level (L/M/H) dBA	Motor Speed (L/M/H) rpm	Air flow ((L/M/H)) CFM	Shipping Dimension (mm)	Shipping Weight (kg)
PUMA X	120V	60	1/3HP	3. 7/3. 8/4. 0	64/68/72	1000/1200/1400	2000/2200/2400	405X402X468	10

SAFETY PRECAUTIONS

All operators shall read, understand and exercise the following safety precautions:

- 1) Do not operate machine:
 - Unless trained and authorized.
 - Unless you have read and understand the operators manual.
 - Inflammable or explosive areas.
 - With a damaged cord or plug.
 - If not in proper operating condition.
 - In outdoor areas.
 - In standing water.
 - With the use of extension cords.
- 2) Before operating machine:
 - Make sure all safety devices are in place and operate properly.
- 3) When using machine:
 - Do not pull machine by cord or plug.
 - Do not pull cord around sharp edges or corners.
 - Do not unplug machine by pulling on the cord.
 - Do not stretch cord.
 - Do not handle plug with wet hands.
 - Keep cord away from heated surfaces.
 - Report machine damage or faulty operation immediately.
- 4) Before leaving or servicing machine:
 - Turn off machine.
 - Unplug cord from outlet.
- 5) When servicing machine:
 - An experienced technician should only perform service work.
 - Unplug cord from outlet.
 - Use manufacturer supplied or approved replacement parts.

GROUNDING INSTRUCTIONS

General – This air mover shall be grounded while in use to protect the operator from electrical shock. The machine is provided with a three – conductor cord and a three – contact grounding type attachment plug to fit the proper grounding type receptacle.

The green (or green & yellow) conductor in the cord is the grounding wire. Never connect this wire to anything other than the grounding pin of the attachment plug.

Make sure that all the safety functions are normal, and ensure that the actual operation voltage is in accordance with the required voltage rate. Make sure that the machine is connected to an outlet having the same configuration as the plug. No adapter should be used with this machine.

This machine is intended for commercial use only. It is constructed for use in an indoor environment and is not intended for any other use.

BASIC OPERATION

- 1) Check the machine for any obstructions in fan prior to operation.
 - If an item blocks the intakes of the air mover, this will hurt the performance of the machine, and could cause the motor to overheat.
- 2) Adjust machine to desired position for operation by pulling it back to its preset height adjustments. (Air blower drying direction without Transport kit refer to **Figure 1**)
- 3) Plug power cord into a grounded outlet.
 - Do not use an extension cord in conjunction with the standard power cord.
- 4) This machine has 3 power settings. Turn the power knob to the desired speed.
 - Low = 1 Med = 2 High = 3.
- 5) To stop the machine at any time, simply turn the power knob to the “off” position.
 - Never stick any object into the air inlet vents or the air outlet vent.

DAISY CHAIN

The PUMA X can be connected in a “Daisy Chain” allowing for two additional PUMA X units to work together on one circuit refer to **Figure 2**

NOTE: The Air Mover has an onboard circuit breaker. If the auxiliary outlet overloads, the circuit breaker will trip. If the breaker trips, unplug the units and press the circuit breaker reset button. Plug the units back into the power source and turn on the switch.

MAINTENANCE

To keep this machine performing well for many years, please follow the following maintenance procedures:

Always confirm the machine is unplugged from the power source prior to performing any maintenance or repairs!

- 1) Unplug machine as soon as you are done using it.
- 2) Check power cord for any damage. If any damage is detected, replace the cord immediately.
- 3) Lubricate the handle assembly and wheels with a water resistant lubricant every month.
- 4) Check machine for loose or missing nuts and bolts, and replace as necessary.
- 5) Clean the outside of the machine with a mild cleaner.

PART LIST

PUMA X part list drawing refer to **Figure 4+5**

WIRING DIAGRAM

PUMA X wiring diagram refer to **Figure 6**

AIR BLOWER SPECIFICATION

Air blower specification refer to **Figure 7**