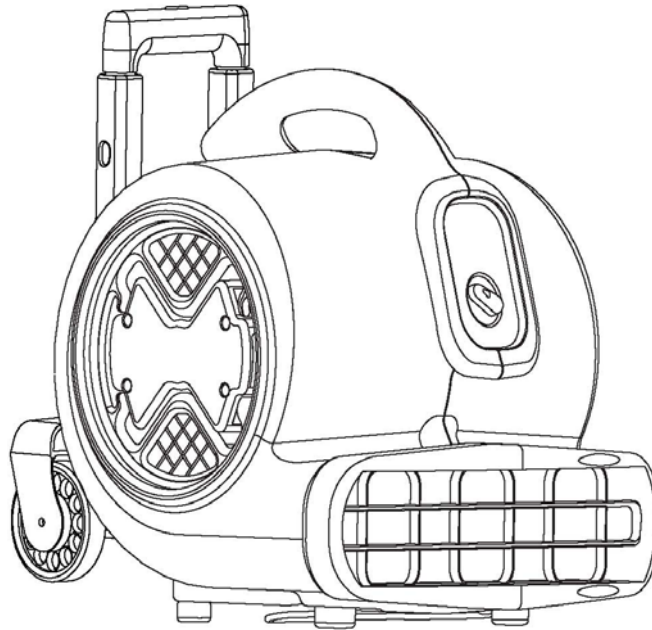




OWNER'S MANUAL

IMPORTANT: READ OWNER'S MANUAL CAREFULLY



MODEL # PUMA G, 3-SPEED TRANSPORTABLE AIR MOVER

FOR YOUR CONVENIENCE, RECORD THE FOLLOWING
IMPORTANT INFORMATION

MODEL: _____

SERIAL NUMBER: _____

DATE PURCHASED: _____

PURCHASED FROM: _____

TABLE OF CONTENTS

Safety Precautions	3
Machine Operations / Daisy Chain	4
Maintenance / Storage	5
Parts List	6-7
Wiring Diagram	8
Warranty	9

MODEL SAFETY PRECAUTIONS

All operators shall read, understand and exercise the following safety precautions:

1) Do not operate machine:

- Unless trained and authorized.
- Unless you have read and understand the operators manual.
- In flammable or explosive areas.
- With a damaged cord or plug.
- If not in proper operating condition.
- In outdoor areas.
- In standing water.
- With the use of extension cords.

2) Before operating machine:

- Make sure all safety devices are in place and operate properly.

3) When using machine:

- Do not pull machine by cord or plug.
- Do not pull cord around sharp edges or corners.
- Do not unplug machine by pulling on the cord.
- Do not stretch cord.
- Do not handle plug with wet hands.
- Keep cord away from heated surfaces.
- Report machine damage or faulty operation immediately.

4) Before leaving or servicing machine:

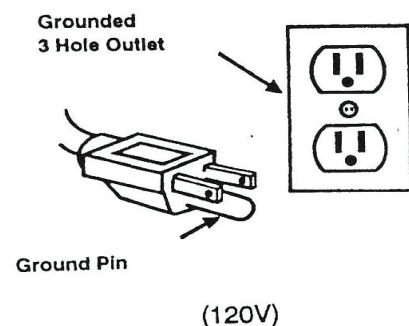
- Turn off machine.
- Unplug cord from outlet.

5) When servicing machine:

- An experienced technician should only perform service work.
- Unplug cord from outlet.
- Use manufacturer supplied or approved replacement parts.

GROUNDING INSTRUCTIONS

General – This air mover shall be grounded while in use to protect the operator from electrical shock. The machine is provided with a three – conductor cord and a three – contact grounding type attachment plug to fit the proper grounding type receptacle. The green (or green & yellow) conductor in the cord is the grounding wire. Never connect this wire to anything other than the grounding pin of the attachment plug.



This machine is for use on a nominal 120 – volt circuit and has a grounding plug that resembles the plug illustrated in the figure below. Make sure that the machine is connected to an outlet having the same configuration as the plug. No adapter should be used with this machine.

This machine is intended for commercial use only. It is constructed for use in an indoor environment and is not intended for any other use.

BASIC OPERATION

- 1) Check the machine for any obstructions in fan prior to operation.
 - If an item blocks the intakes of the air mover, this will hurt the performance of the machine, and could cause the motor to overheat.
- 2) Adjust machine to desired position for operation by pulling it back to its preset height adjustments.
- 3) Plug power cord into a grounded outlet.
 - **Do not use an extension cord in conjunction with the standard power cord.**
- 4) This machine has 3 power settings. Turn the power knob to the desired speed.
 - Low = 1 Medium = 2 High = 3
- 5) To stop the machine at any time, simply turn the power knob to the “off” position.
 - **Never stick any object into the air inlet vents or the air outlet vent.**

DAISY CHAIN

The SSS PUMA G can be connected in a “Daisy Chain” allowing for two (2) additional SSS PUMA G units to work together on one circuit.

- **Only use SSS PUMA G units together in the daisy chain.**



Note:

Air mover has an on-board circuit breaker. If the auxiliary outlet overloads, the circuit breaker will trip. If the breaker trips, unplug the units and press the circuit breaker reset button.

Plug the units back into the power source and turn on the switch.

MAINTENANCE

To keep this machine performing well for many years, please follow the following maintenance procedures:

- **Always confirm the machine is unplugged from the power source prior to performing any maintenance or repairs!**

- 1) Unplug machine as soon as you are done using it.
- 2) Wrap the power cord around the carrying handle.
- 3) Check power cord for any damage. If any damage is detected, replace the cord immediately.
- 4) Lubricate the handle assembly and wheels with a water resistant lubricant every month.
- 5) Check machine for loose or missing nuts and bolts, and replace as necessary.
- 6) Clean the outside of the machine with a mild cleaner.



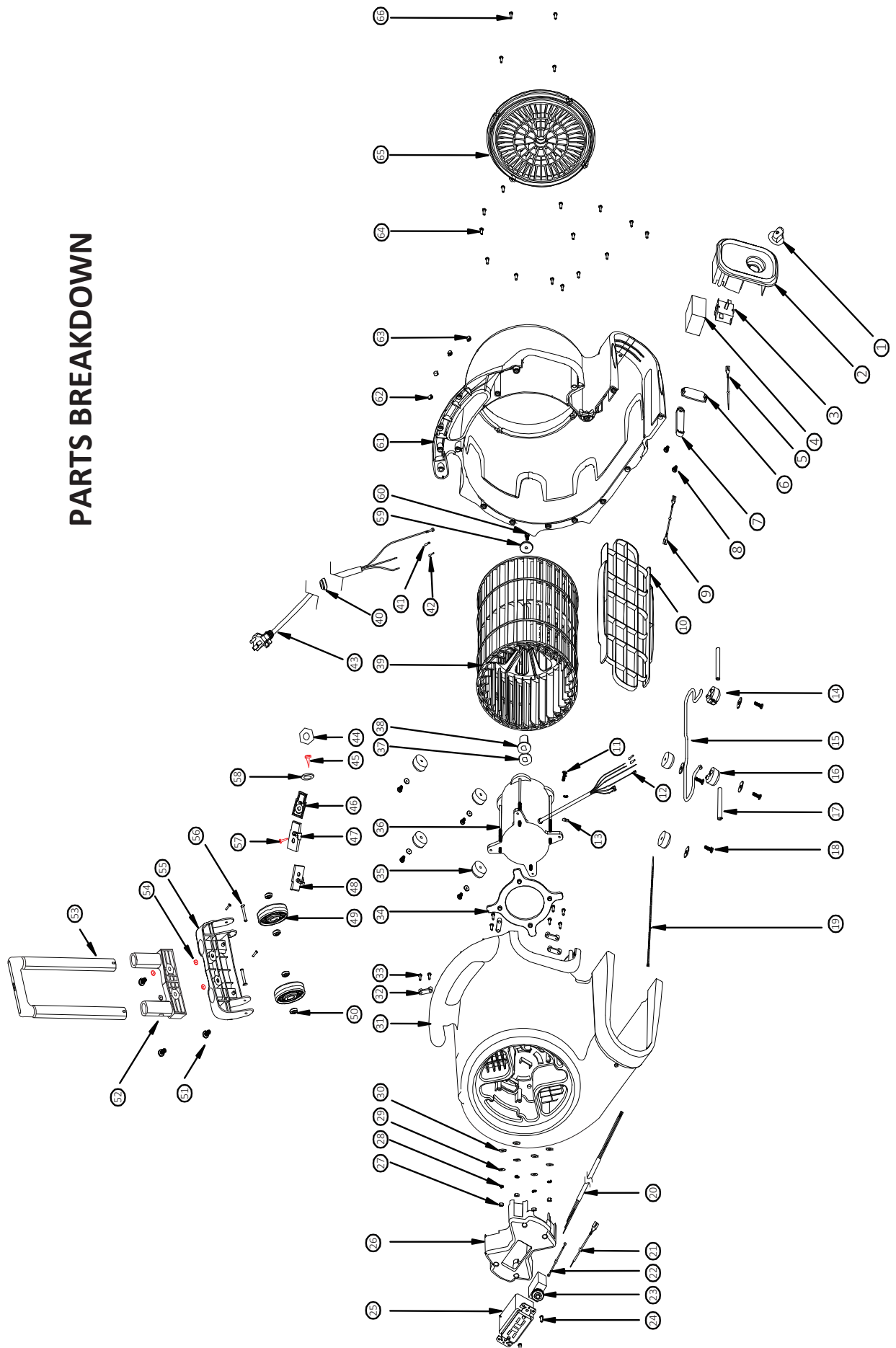
STORAGE

Air Movers can be stacked (up to 4 units) on their sides for storage.

NOTICE:

1. Stacking feature is not secure for transportation.
2. Remove the filters (optional) before stacking.

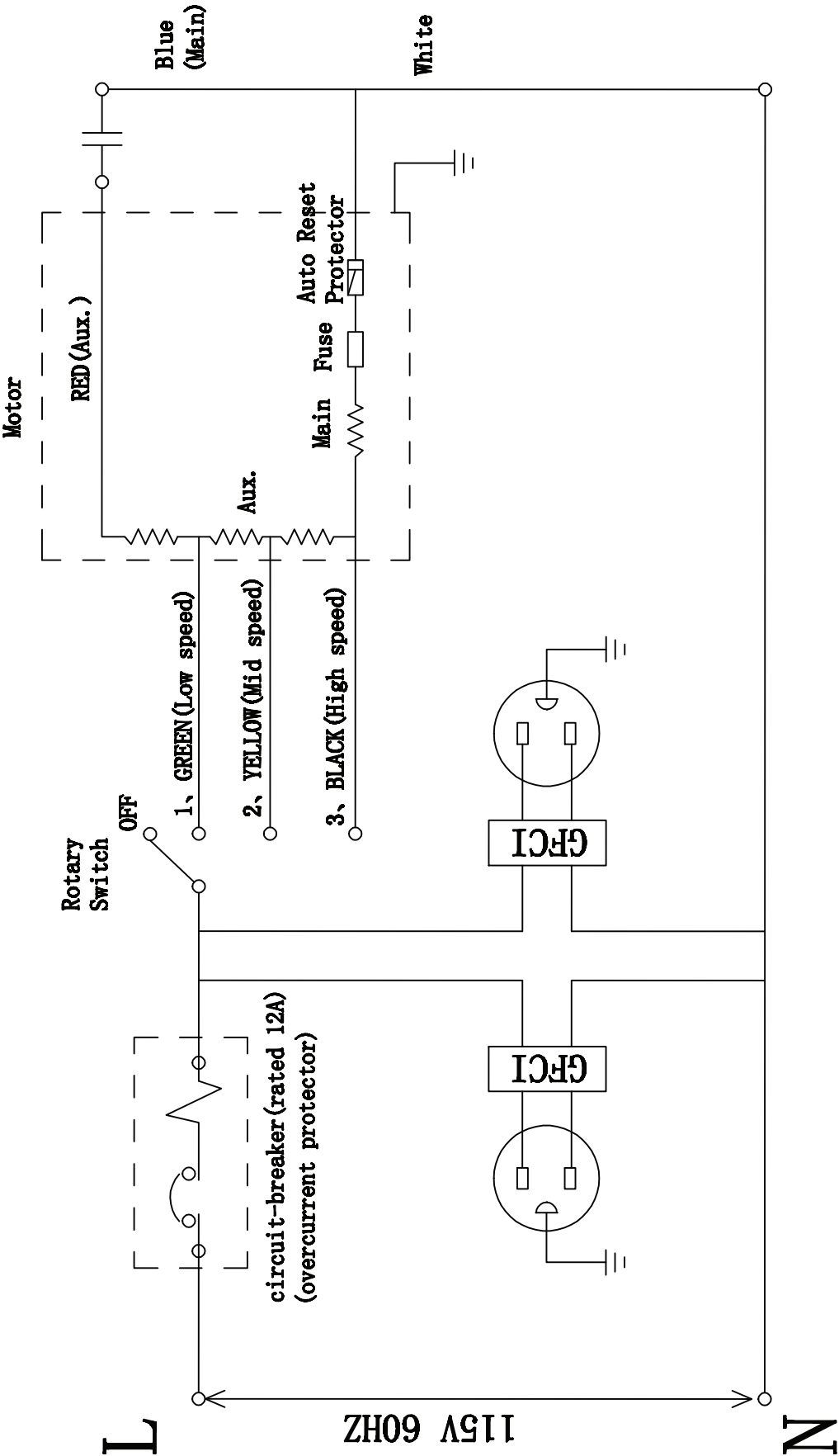
PARTS BREAKDOWN



PARTS LIST

BASE ASSEMBLY - RACER / TPRACER							
DIA NO	PART NUMBER	DESCRIPTION	NO REQ'D	DIA NO	PART NUMBER	DESCRIPTION	NO REQ'D
1	XP600-001	KNOB, ON / OFF SWITCH PLATE	1	34	XP600-034	PLATE, HEAT INSULATION	1
2	XP600-002		1	35	XP600-035	RUBBER FEET (SET OF 6 PCS)	1
3	XP600-003	SWITCH ASSEMBLY	1	36	XP600-036	MOTOR	1
4	XP600-004	CAPACITOR	1	37	XP600-037	WASHER, D-SHAPED	1
5	XP600-005	MALE, LEAD (SWITCH)	1	38	XP600-038	BUSHING	1
6	XP600-006	CONTROL SWITCH CLIP	1	39	XP600-039	FAN WHEEL	1
7	XP600-007	CAPACITOR CLIP	1	40	XP600-040	CORD STRAIN RELIEF	1
8	XP600-008	SCREW, 3.5 X 12, PAN HEAD	4	41	XP600-041	CLOSED-END TERMINAL (C4)	2
9	XP600-009	FEMALE END LEAD (SWITCH)	1	42	XP600-042	CLOSED-END TERMINAL (C5)	3
10	XP600-010	VENT, FRONT OUTLET	1	43	XP600-043	POWER CORD	1
11	XP600-011	SCREW, M5 X 6, PAN HEAD	1	44	XP600-044	NUT, M6, HEX	4
12	XP600-012	FEMALE TERMINAL (MOTOR)	3	45	XP600-045	SCREW, SELF-TAPPING, 2.9 X 14	4
13	XP600-013	LOCKWASHER, COUNTERSINK	1	46	XP600-046	NUT, CLIPPING BLOCK 1	4
14	XP600-014	RUBBER FOOT, RIGHT	1	47	XP600-047	NUT, CLIPPING BLOCK 2	2
15	XP600-015	KICK STAND	1	48	XP600-048	NUT, CLIPPING BLOCK 3	2
16	XP600-016	RUBBER FOOT, LEFT	1	49	XP600-049	WHEEL (HANDLE)	2
17	XP600-017	RUBBER SLEEVE, KICK STAND	2	50	XP600-050	BEARING, WHEEL	4
18	XP600-018	SCREW, SELF-TAPPING, M5 X 20	8	51	XP600-051	SCREW, PAN HEAD, M6 X 20	4
19	XP600-019	NYLON TIE	1	52	XP600-052	CENTERING BLOCK, UPPER HANDLE	1
20	XP600-020	LEAD WIRE, SWITCH	1	53	XP600-053	UPPER HANDLE	1
21	XP600-021	LEAD WIRE, CIRCUIT BREAKER	1	54	XP600-054	WASHER, FLAT, 6.4	4
22	XP600-022	GROUND WIRE (GFCI)	1	55	XP600-055	CENTERING BLOCK, LOWER HANDLE	1
23	XP600-023	CIRCUIT BREAKER, 12A	1	56	XP600-056	RIVET, 6 X 46	2
24	XP600-024	SCREW, SELF-TAPPING, M3 X 6	2	57	XP600-057	SCREW, SELF-TAPPING, 2.9 X 10	4
25	XP600-025	RECEPTICAL, GFCI	1	58	XP600-058	WASHER, FLAT, 3.5	4
26	XP600-026	VENT, COVER (MOTOR SIDE)	1	59	XP600-059	WASHER, FLAT, 5.4	1
27	XP600-027	NUT, M5	4	60	XP600-060	SCREW, PAN HEAD, M5 X 16	1
28	XP600-028	SPRING WASHER, M5	5	61	XP600-061	HOUSING, RIGHT	1
29	XP600-029	WASHER, FLAT	12	62	XP600-062	HOLE PLUG #2	2
30	XP600-030	WASHER, HEAT INSULATION	4	63	XP600-063	HOLE PLUG #1	2
31	XP600-031	HOUSING, LEFT	1	64	XP600-064	SCREW, SELF-TAPPING, ST4 X 16	21
32	XP600-032	CABLE CLIP, #2	4	65	XP600-065	VENT, COVER (FAN SIDE)	1
33	XP600-033	SCREW, SELF-TAPPING, ST4 X 12	8	66	XP600-066	SCREW, SELF-TAPPING ST5 X 12	1

WIRING DIAGRAM





WARRANTY POLICY

The warranty terms outlined below are in lieu of any other warranties, either stated or implied, including any implied warranty of merchantability, fitness for a particular purpose or otherwise. Under no circumstances will seller be liable for any loss, damage, expense or consequential damages arising in connection with the use or inability to use this product.

This warranty does not apply to damage or defect caused by accident, misuse, negligence, abuse, fire or to any Triple S product which has been serviced by anyone other than a Triple S authorized service representative. Housings or parts that have become damaged as a result of improper use of the machine are excluded from this warranty. Refer to owner's manual for proper machine use and maintenance. Parts that are expected to wear from normal use and, therefore are not covered under the parts warranty include, but are not limited to: batteries (pro-rated for one year); bearings; belts; brushes; filters; squeegees; switches; and tires.

This warranty commences on the date of purchase of the product by the original end user from an authorized Triple S distributor, subject to proof of purchase. If proof of purchase date is unavailable, the warranty begins 90 days after the sale of the product to an authorized Triple S distributor.

- Subject to the conditions outlined above, the manufacturer warrants the rotationally-molded polyethylene housings and parts on its machines to be free from defects in materials and workmanship, under normal use and service for twelve (12) years to the original purchaser.
- Under this warranty, the manufacturer guarantees the performance of non-polyethylene parts and components on Triple S machines to be free from defects for up to five (5) years to the original end user. Parts replaced under this warranty are guaranteed for the remainder of the original warranty period.
- Labor charges are covered for five (5) full years from the date of purchase for Triple S products, provided an authorized Triple S service provider is used for repair. No travel coverage is extended for cord electric machines.

Product Exceptions & Exclusions: Battery chargers and all accessories are warranted for one year.

Triple S reserves the right to change the warranty policy without notice.