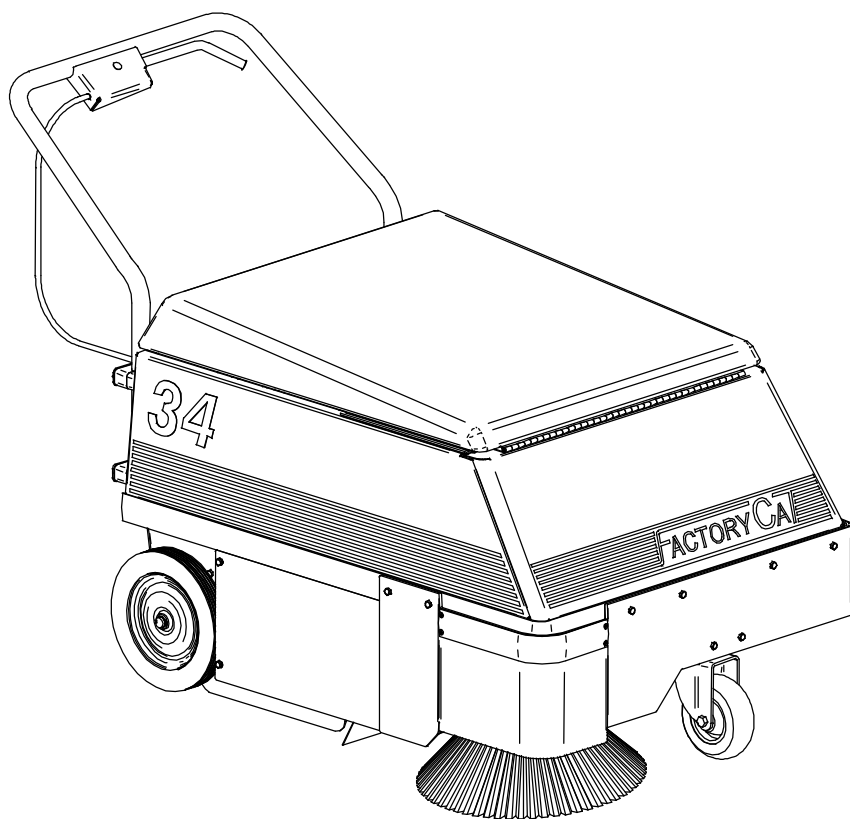


Operator, Parts, & Service Manual



Model 34 Industrial Sweeper

R.P.S. Corporation
P.O. Box 368
Racine, Wisconsin 53401

Phone: 1-800-634-4060
Fax: 1-866-632-6961

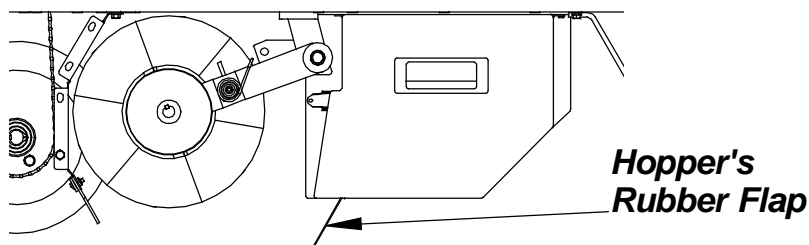
www.factorycat.com

Copyright R.P.S. Corporation 2002
Edition 7, World Rights Reserved.

TROUBLESHOOTING GUIDE

PROBLEM: BROOMS ROTATE, BUT MACHINE DOES NOT SWEEP WELL.

1. Main Broom may be worn out. While machine can sweep with as little as one half inch of main broom fiber, main broom should have 1.0" of fiber or more to sweep really well.
2. Main Broom bounces. This will cause skipping over debris. If this occurs, broom must be replaced.
Cause of broom bounce is generally bent fiber on one side, causing broom to become oval. This, in turn, is caused by leaving the broom on the ground for long periods of time without broom rotating, which will bend the fiber. A second cause is use of a main broom that is made incorrectly. For this reason, avoid "will-fit" main brooms made by other manufacturers to fit our machines. Our design requires brooms in perfect balance and perfectly round.
3. Check rubber flap on lip of the hopper. **This piece is very important to good sweeping, and must be in good condition or machine will throw debris forward of machine.** If flap is torn or missing, replace with a new part.



PROBLEM: MACHINE SWEEPS UP DEBRIS FINE, BUT BLOWS DUST.

1. Filter is dirty. With power off, turn crank 20 times to clean filter.
2. Air is shut off. Open air shutoff control.
3. Filter is clogged from mud. Remove and inspect filter. Clean if necessary by shaking and vacuuming the filter.
4. Air leaks. Check and replace neoprene floor seals as needed.
5. Is fan turning with main motor? (Has set screw come out of fan?).

PROBLEM: MACHINE SWEEPS OK, DUST CONTROL PICKS UP DUST, BUT BLOWS IT INTO THE ENGINE COMPARTMENT.

1. Remove the black filter cover. *(There are three screws at the rear. Cover fits into a slot at the front).* Then check for improper seal between filter and body. Filter is taped to the filter element support grill (Part No. 4-505) with double-sided carpet tape. This seal must be tight.
2. Check filter for pinhole leaks and repair or replace as needed. *(You can pull filter and its mounting grid straight out of the machine once the filter cover is removed. You can also inspect the filter from underneath the machine).*

SPARE PARTS BOOK

Walk-Behind Sweepers

Spare parts are sold through authorized Dealers. If you have forgotten your dealer's name, or you have moved the machine to a new location, please **Call us at: 1 (800) 634-4060, or Fax us at: 1 (866) 901-3335** and we will re-establish a dealer contact for you.

TO ORDER PARTS:

Please provide the machine's Serial No. with your order. Normally, ordinary parts orders are shipped out the same day the order is received.

EMERGENCY ORDERS:

Within the Continental United States, We can supply any part that weighs under 70lbs within 3 business days, not counting weekends or National Holidays.

However, if parts are ordered on an "Emergency" basis, this means that we will ship them by fastest means, generally by air courier service, at the customers expense.

FREIGHT:

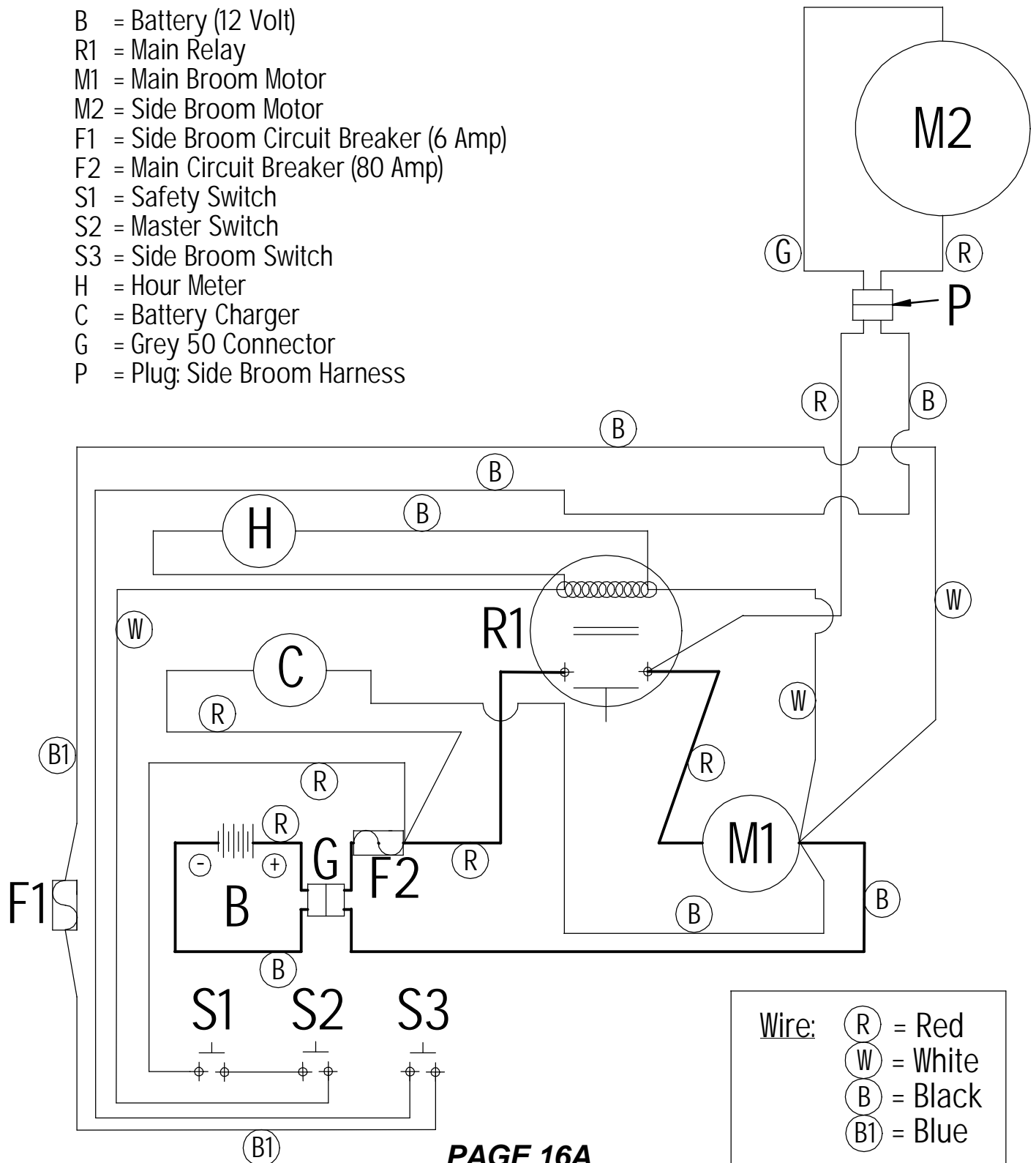
Within the United States, the normal shipment method is by customer choice, while the emergency shipment method is by R.P.S. choice - normally by fastest means. This means that emergency orders will generally cost the customer more than normal orders.

In both cases, the customer is responsible for all freight costs.

Wiring Schematics

For machines after Serial No. "BY-2220"
with Side Broom Circuit Breaker

- B = Battery (12 Volt)
- R1 = Main Relay
- M1 = Main Broom Motor
- M2 = Side Broom Motor
- F1 = Side Broom Circuit Breaker (6 Amp)
- F2 = Main Circuit Breaker (80 Amp)
- S1 = Safety Switch
- S2 = Master Switch
- S3 = Side Broom Switch
- H = Hour Meter
- C = Battery Charger
- G = Grey 50 Connector
- P = Plug; Side Broom Harness



For machines after Serial No. "CI-3200" with
Single Electrical Switch for Main and Side Brooms

- B = Battery (12 Volt)
 R1 = Main Relay
 M1 = Main Broom Motor
 M2 = Side Broom Motor
 F1 = Side Broom Circuit Breaker (6 Amp)
 F2 = Main Circuit Breaker (80 Amp)
 S1 = Safety Switch
 S2 = Main and Side Broom Switch
 H = Hour Meter
 C = Battery Charger
 G = Grey 50 Connector
 P = Plug: Side Broom Harness
 L = Warning Light Unit
-
- PAGE 16B**
- Wire:**

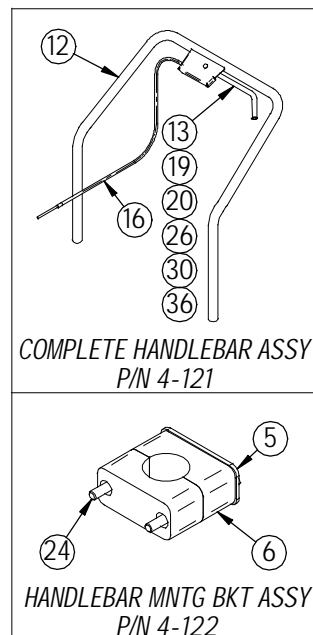
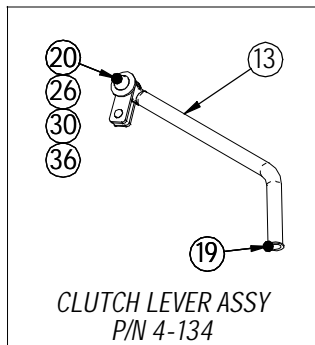
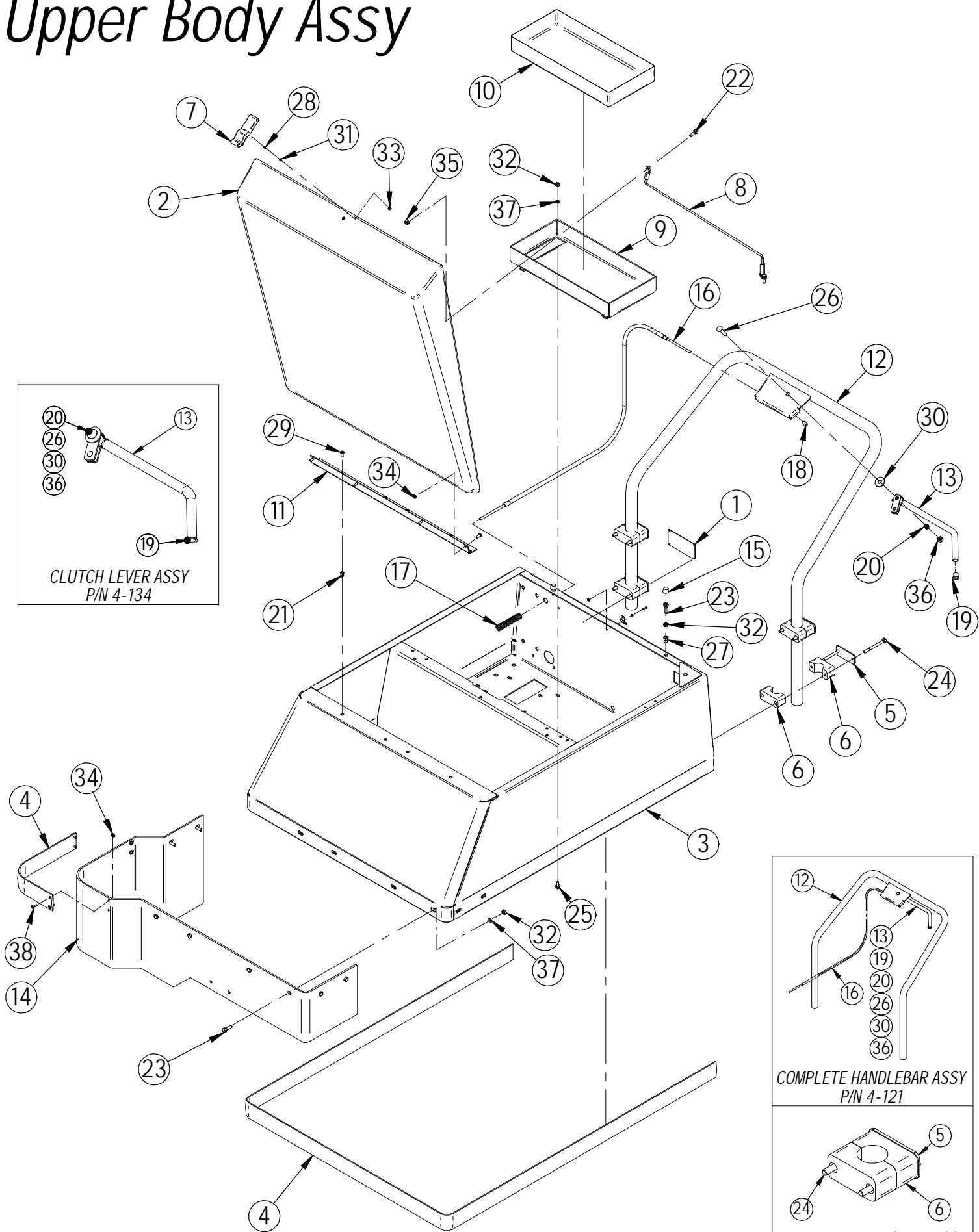
(R) = Red

(W) = White

(B) = Black

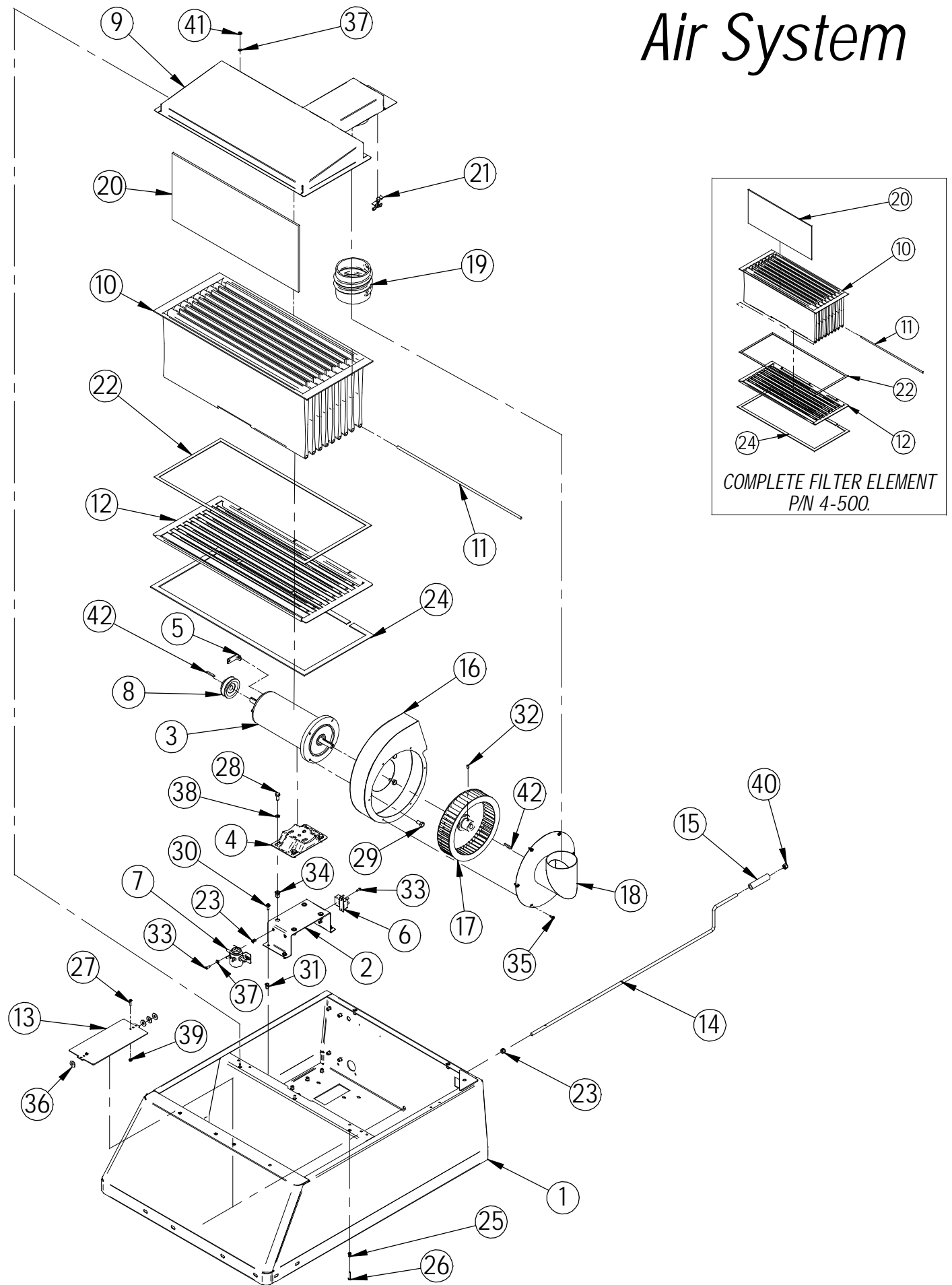
(B1) = Blue

Upper Body Assy



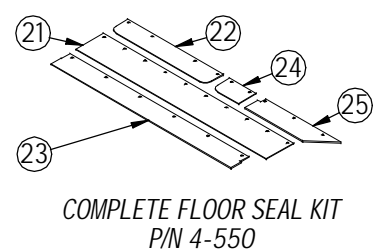
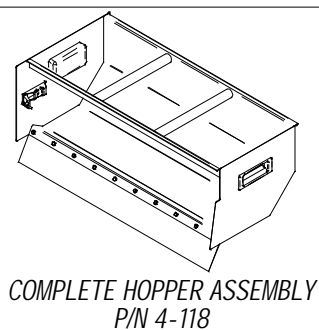
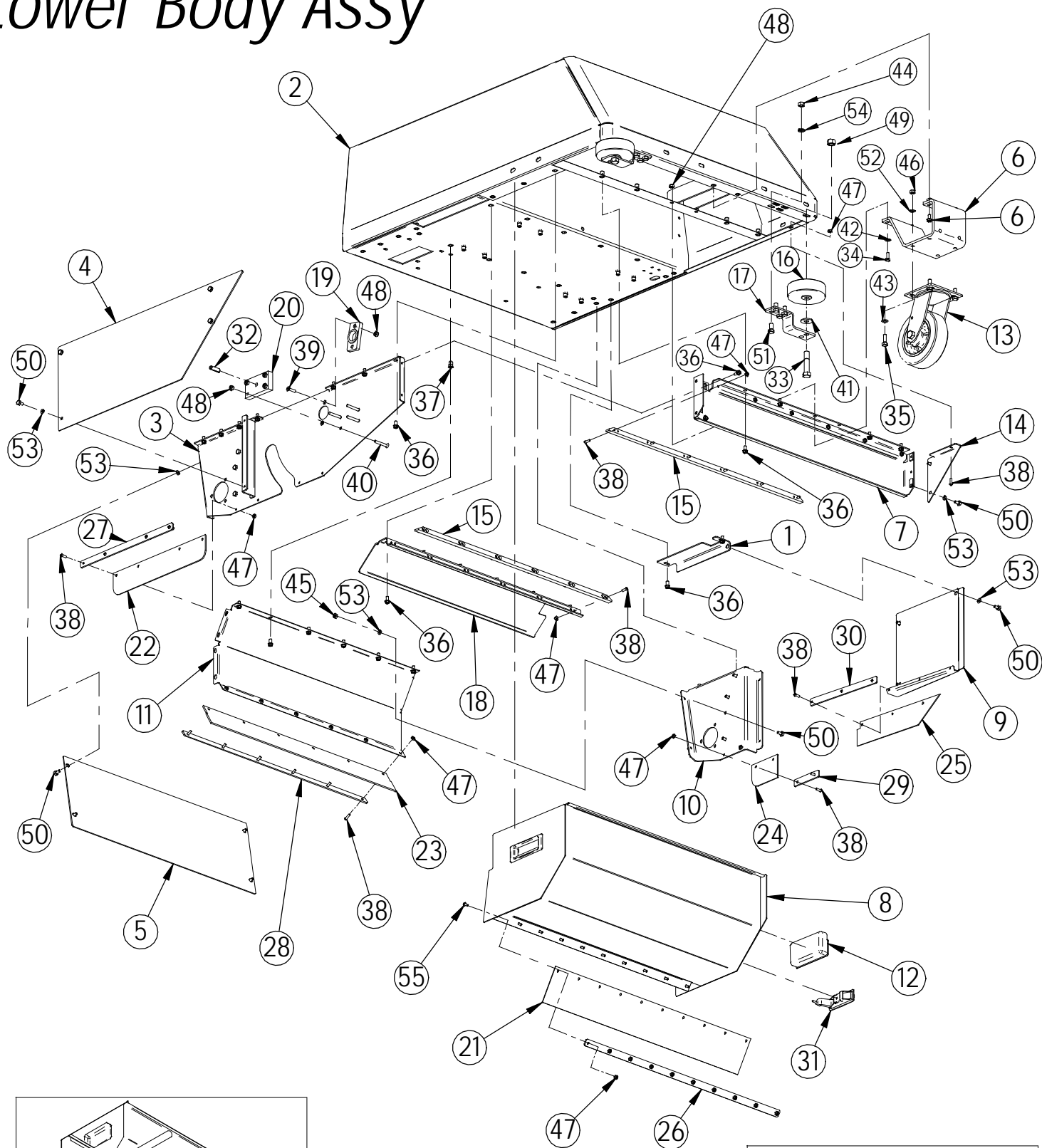
Item	Part No.	Description	Comments	Qty
1	4-101 21-0101	SERIAL NO. PL. (FACTORY CAT) SERIAL NO. PL. (TOMCAT)		1
2	4-110	HOOD		1
3	4-111	MAIN BODY		1
4	4-112	2" BLK STRIP BUMPER	12 FT SECTION	1
5	4-122A	HANDLEBAR MTG BKT	4-122 INCL. 4-122A, 4-122B, & HARDWARE	4
6	4-122B	BLACK PLASTIC CLAMP	4-122 INCL. 4-122A, 4-122B, & HARDWARE	8
7	4-124	HOOD LATCH	COMPLETE 2 PC WITH RIVETS	1
8	4-126A	HOOD CABLE		1
9	4-128	BATTERY TRAY		1
10	4-128A	BATTERY TRAY LINER		1
11	4-131	HINGE 23 3/4" SS		1
12	4-132	HANDLE BAR WELDMENT	P/N 4-121 INCL. ITEMS 12,13,16,19,20,26,30, & 36	1
13	4-134A	CLUTCH LEVER	P/N 4-134 INCL. ITEMS 19,20,26,30,& 36	1
14	4-140	BUMPER	INCLUDES HARDWARE (OPTIONAL)	1
15	4-170	RUBBER HOOD STOP		2
16	4-370	CLUTCH/BRAKE CABLE		1
17	4-371	CLUTCH CABLE RETURN SPRING		1
18	4-379	CLUTCH CABLE ADJ. NUT		1
19	4-387	TUBE PLUG		1
20	4-388	CLUTCH TENSION SPRING		1
21	H-1032HCN	HCN #10-32		7
22	H-13003	HCS 1/4"-20 X 3/4"		2
23	H-13005	HCS 1/4"-20 X 1"		10
24	H-13015	HCS 1/4"-20 X 3"		8
25	H-19901	FB CASHD 1/4"-20 X 1/2"		4
26	H-21259	CB 5/16"-18 X 1 1/2"		1
27	H-250HCN	HCN 1/4"-20		50
28	H-28679	PPH #4-40 X 1/2"		4
29	H-29049	PPH #10-32 X 1/2"		8
30	H-33008	FW 3/8" SAE		1
31	H-33066	FW #4 SAE		4
32	H-36102	HN 1/4"-20		14
33	H-37006	NYLOK #4-40		4
34	H-37015	NYLOK #10-32		8
35	H-37018	NYLOK 1/4"-20		2
36	H-37021	NYLOK 5/16"-18		1
37	H-71063	LW 1/4" SS		12
38	H-72683	FHP #10-32 X 5/8"		4

Air System



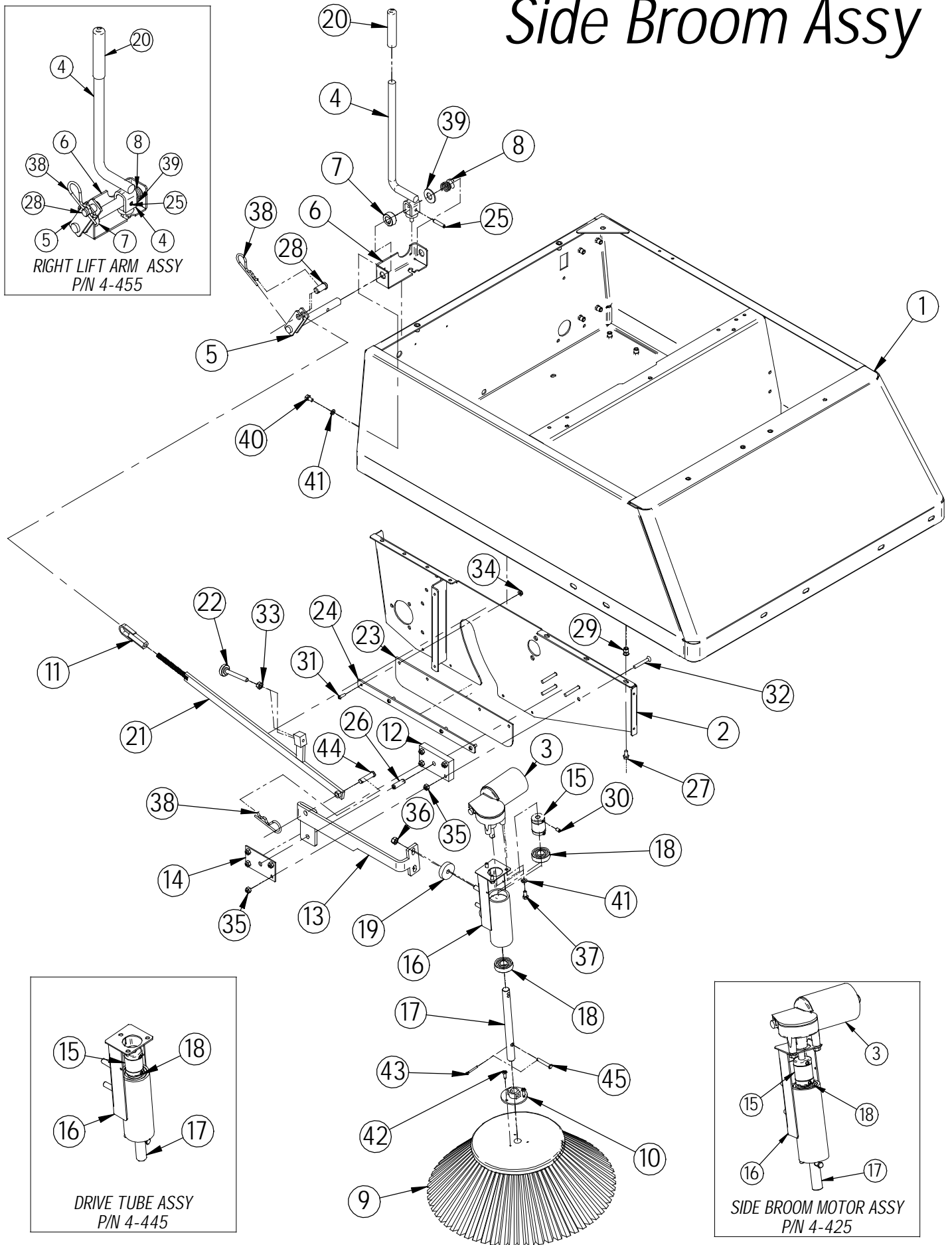
Item	Part No.	Description	Comments	Qty
1	4-111	MAIN BODY		1
2	4-125	MOTOR SUPT BRACKET		1
3	4-201	12V,TWIN SHAFT MOTOR		1
4	4-201B	MOTOR CRADLE		1
5	4-210	TERMINAL CLIP		1
6	4-232	CIR. BREAKER - 12V/80A		1
7	4-233	12V SOLENOID		1
8	4-301	MAIN DRIVE PULLEY		1
9	4-501	FILTER HOOD		1
10	4-502	FILTER ELEMENT	P/N 4-502 INCL. P/N 4-502K, SEAL KIT	1
11	4-503A	FILTER WEIGHT ROD	P/N 4-503 INCL. SET OF 9 RODS	9
12	4-505	FILTER GRILL		1
13	4-506	FILTER BEATER BAR		1
14	4-507	BEATER BAR		1
15	4-509	BEATER BAR HANDLE		1
16	4-511	BLOWER HOUSING		1
17	4-512	BLOWER WHEEL		1
18	4-513	BLOWER DOOR		1
19	4-520A	BLOWER HOSE		1
20	4-521A	FILTER SEPARATOR	P/N 4-521 INCL. SET OF 9 SEPARATORS	9
21	4-522	DOOR LATCH	INCLUDES SET OF 2	1
22	H-002	1/2" DBL SIDED TAPE	P/N 4-502K INCL. P/N H-002 & H-048	1
23	H-00287	.375 HEYCO COLLAR		1
24	H-048	3/16" PVC FOAM	P/N 4-502K INCL. P/N H-002 & H-048	1
25	H-1032HCN	HCN #10-32		15
26	H-10436-00106	HXMS #10-32 X 1"		1
27	H-10436-00107	FB #8-32 X 3/4"		1
28	H-13053	HCS 5/16"-18 X 3/4"		1
29	H-13103	HCS 3/8"-16 X 3/4"		1
30	H-19901	FB CASHD 1/4"-20 X 1/2"		1
31	H-250HCN	HCN 1/4"-20		50
32	H-25328	SSS CP 1/4"-20 X 3/8"		1
33	H-29048	RPH #10-32 X 1/2"		2
34	H-312HCN	HCN 5/16"-18		4
35	H-31810	HW #10 X 1/2		1
36	H-33008	FW 3/8" USS		1
37	H-33074	FW #10 SAE		2
38	H-33620	LW 5/16"		1
39	H-37012	NYLOK #8-32		1
40	H-37024	NYLOK 3/8"-16		1
41	H-37408	KN #10-32		1
42	H-K14320	3/16" X 1 1/4" KEY		2

Lower Body Assy



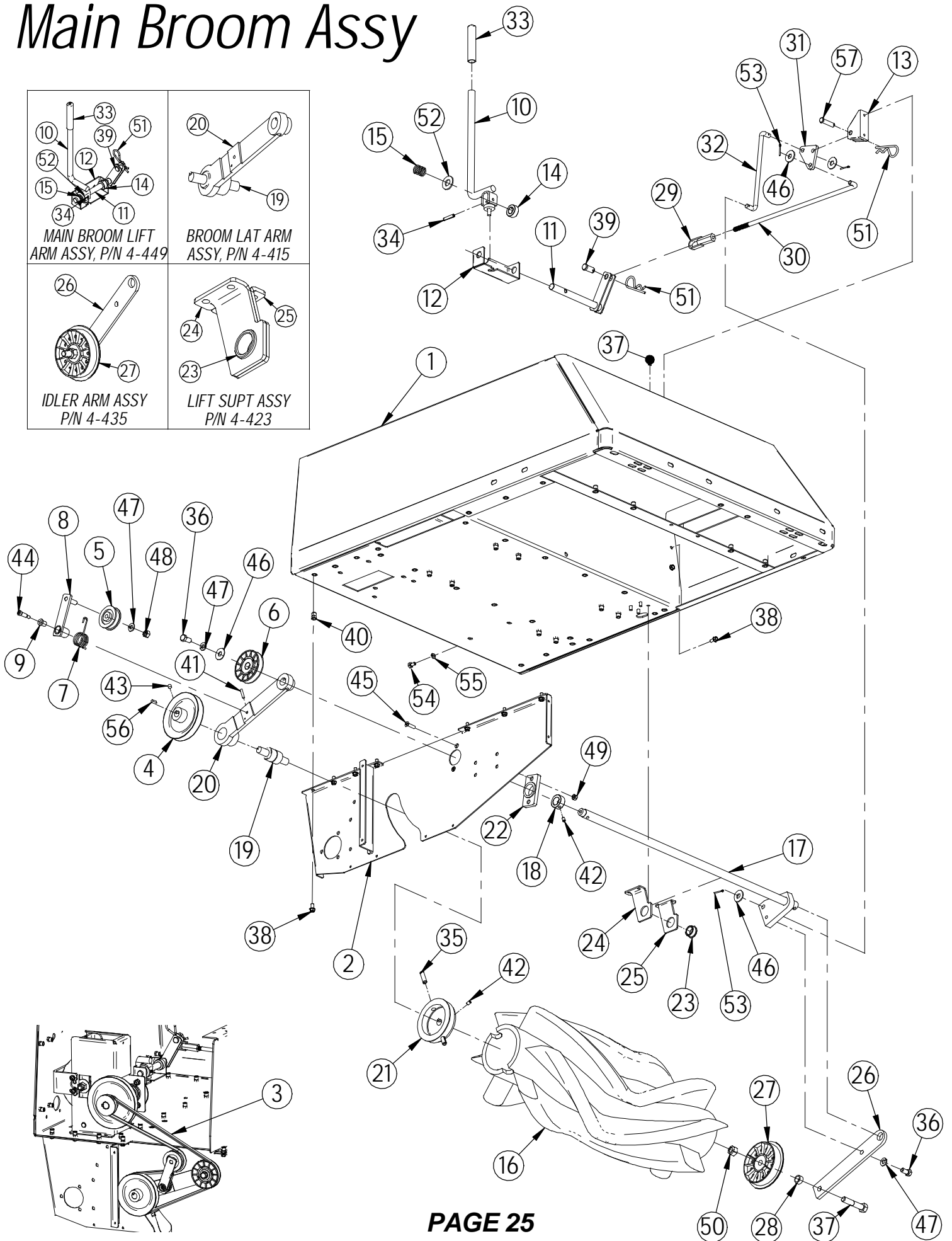
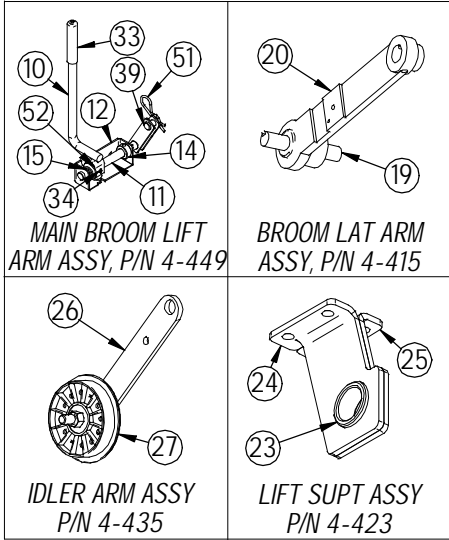
Item	Part No.	Description	Comments	Qty
1	4-108	DOOR MNT ANGLE		1
2	4-111	MAIN BODY		1
3	4-113	R. INNER SIDE PANEL		1
4	4-114	SKIRT PLATE, RT		1
5	4-115	SKIRT PLATE REAR		1
6	4-116	CASTER MTG BRACKET		1
7	4-117	FRONT CROSS PANEL		1
8	4-118B	HOPPER BODY		1
9	4-119	BROOM ACCESS HATCH	4-118 INCL. 4-118B, 4-127, 5-130, SEALS & HARDWARE	1
10	4-120	REAR INNER PANEL, LT		1
11	4-123	INNER CURVED PANEL		1
12	4-127	HANDLE		2
13	7-130B 7-130G	6" CASTER, BLACK 6" CASTER, GREY		1
14	4-135	L.F. PANEL GUSSET		1
15	4-141	HDPE HOPPER SLIDE		2
16	4-142	ROLLER		2
17	4-143	ROLLER BRACKET		2
18	4-384	ATTENUATOR		1
19	4-421	SUPPORT BLOCK		1
20	4-441	BROOM MOUNTING BLOCK		1
21	4-514	HOPPER FLOOR SEAL	P/N 4-550 INCLUDES: ITEMS 21,22,23,24, & 25	1
22	4-515	RIGHT FLOOR SEAL		1
23	4-516	REAR FLOOR SEAL		1
24	4-517	CORNER FLOOR SEAL		1
25	4-518	BROOM FLOOR SEAL		1
26	4-525	HOPPER SEAL STRIP		1
27	4-526	RH SEAL STRIP		1
28	4-527	REAR SEAL STRIP		1
29	4-528	CORNER SEAL STRIP		1
30	4-529	CURTAIN CLAMP		1
31	5-130	SIDE DOOR LATCH		1
32	H-10436-0105	3/8" X 1 1/4" SPRING PIN		1
33	H-11213	HCS 1/2"-13 X 2 1/2"		2
34	H-13003	HCS 1/4"-20 X 3/4"		2
35	H-13055	HCS 5/16"-18 X 1"		4
36	H-19901	FB CASHD 1/4"-20 X 1/2"		29
37	H-250HCN	HCN 1/4"-20		50
38	H-29055	RPH #10-32 X 5/8"		28
39	H-29570	FHP 1/4"-20 X 1"		2
40	H-29576	FHP 1/4"-20 X 1 3/4"		4
41	H-33012	FW 1/2" SS		2
42	H-33078	FW 1/4" SAE		2
43	H-33080	FW 5/16" SAE		4
44	H-70712	HN 3/8"-16 SS		8
45	H-36102	HN 1/4"-20		8
46	H-36104	HN 5/16"-18		4
47	H-37015	NYLOK #10-32		35
48	H-37018	NYLOK 1/4"-20		8
49	H-37030	NYLOK 1/2"-13		2
50	H-70001	HCS 1/4"-20 X 1/2 SS"		21
51	H-70103	HCS 3/8"-16 X 3/4" SS		8
52	H-33620	LW 5/16"		4
53	H-71063	LW 1/4" SS		23
54	H-71067	LW 3/8" SS		8
55	H-71671	HXMS #10-32 X 1/2" SS		10

Side Broom Assy



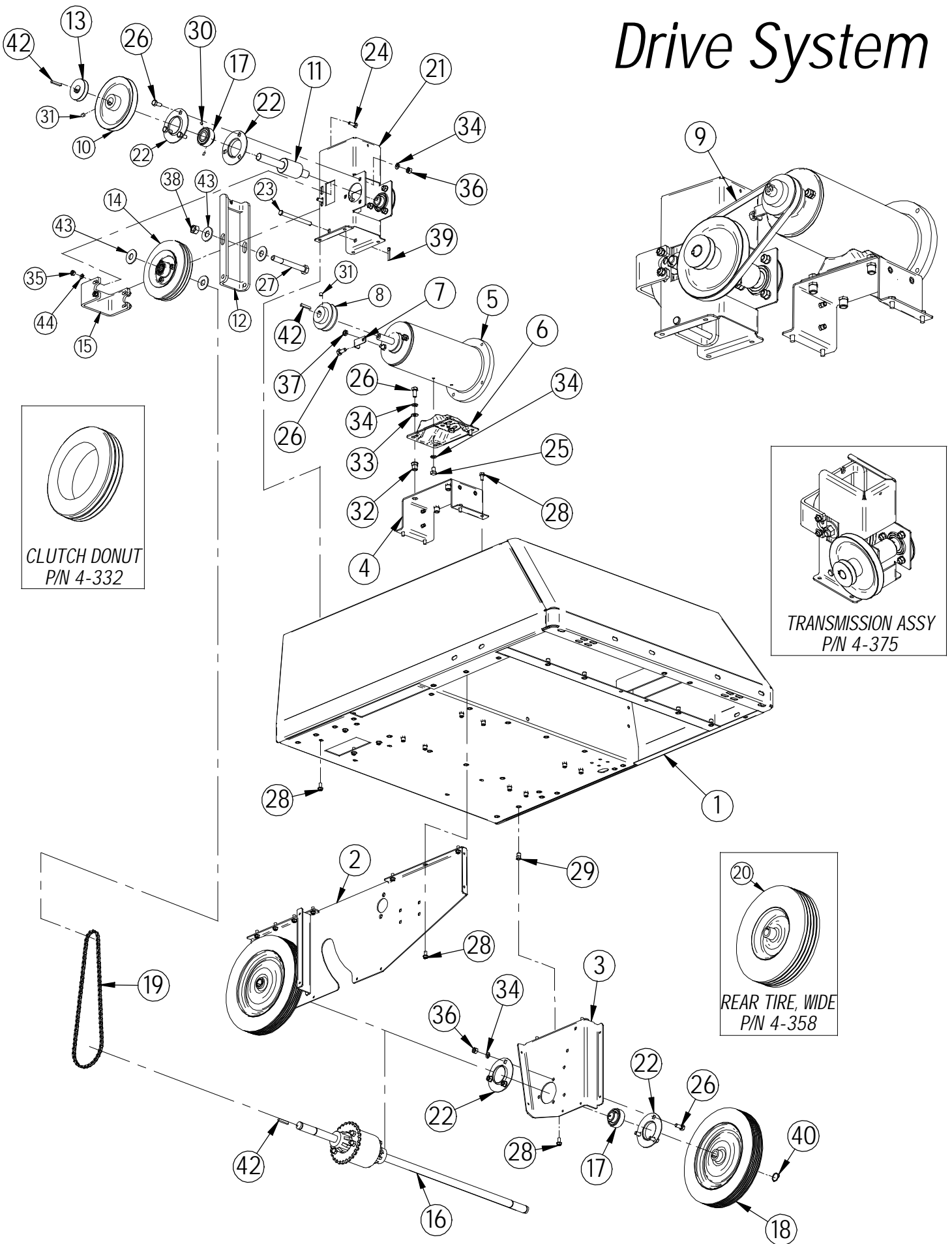
Item	Part No.	Description	Comments	Qty
1	4-111	MAIN BODY		1
2	4-113	R. INNER SIDE PANEL		1
3	4-220	SIDE BROOM MOTOR	P/N 4-425 INCL. ITEMS 3,15,16,17,18 & HARDWARE	1
4	4-376	BROOM LIFT LEVER	P/N 4-455 INCL. ITEMS 4,5,6,7,8,19 & HARDWARE	1
5	4-378	BROOM LIFT SHAFT		1
6	4-381	LIFT LEVER BASE, RT		1
7	4-385	LIFT LEVER COLLAR		1
8	4-386	LIFT LEVER SPRING		1
9	4-402	SIDE BROOM POLYPROPYLENE	P/N 4-402 INCLUDES P/N 4-404	1
10	4-404	SIDE BROOM CLUTCH PLATE	P/N 4-402 INCLUDES P/N 4-404	1
11	4-436	ADJ. BROOM LIFT		1
12	4-441	BROOM MOUNTING BLOCK		1
13	4-442	SIDE BROOM ARM		1
14	4-443	BROOM RETAINING PLATE		1
15	4-444	BROOM SAFETY DRIVE CPLG		1
16	4-445A	BROOM MOTOR MOUNT	P/N 4-445 INCL. ITEMS 15,16,17,18 & HARDWARE	1
17	4-445B	BROOM SHAFT		1
18	4-445C	DRIVE TUBE BEARING		2
19	4-446	GROMMET-3/8 ID X 1-1/2 OD X .375		2
20	4-448	HANDLE GRIP		1
21	4-456	SIDE BROOM LONG LINK		1
22	4-457	ADJUSTMENT KNOB		1
23	4-515	RIGHT FLOOR SEAL		1
24	4-526	RH SEAL STRIP		1
25	H-10436-0010	1/4" X 1 1/4" SPRING PIN		1
26	H-10436-0105	3/8" X 1 1/4" SPRING PIN		1
27	H-19901	FB CASHD 1/4"-20 X 1/2"		7
28	H-2250- 218	1/2" X 1" CLEVIS PIN		1
29	H-250HCN	HCN 1/4"-20		50
30	H-25328	SSS CP 1/4"-20 X 3/8"		2
31	H-29055	RPH #10-32 X 5/8"		4
32	H-29576	FHP 1/4"-20 X 1 3/4"		4
33	H-36104	HN 5/16"-18		1
34	H-37015	NYLOK #10-32		4
35	H-37018	NYLOK 1/4"-20		8
36	H-37021	NYLOK 5/16"-18		2
37	H-38558	HCS M6-1.0 X 14		3
38	H-45285	HITCH PIN CLIP 9		2
39	H-50102	FW 5/8 X 1 5/16"		1
40	H-70001	HCS 1/4"-20 X 1/2 SS"		2
41	H-71063	LW 1/4" SS		5
42	H-72916	PPH SMS #8 X 3/4" SS		3
43	H-HAIR4	#4 HAIR PIN		1
44	H-ZCP154	3/8" X 1 1/2" CLEVIS PIN		1
45	H-ZCP44	1/4" X 1 1/2" CLEVIS PIN		1

Main Broom Assy



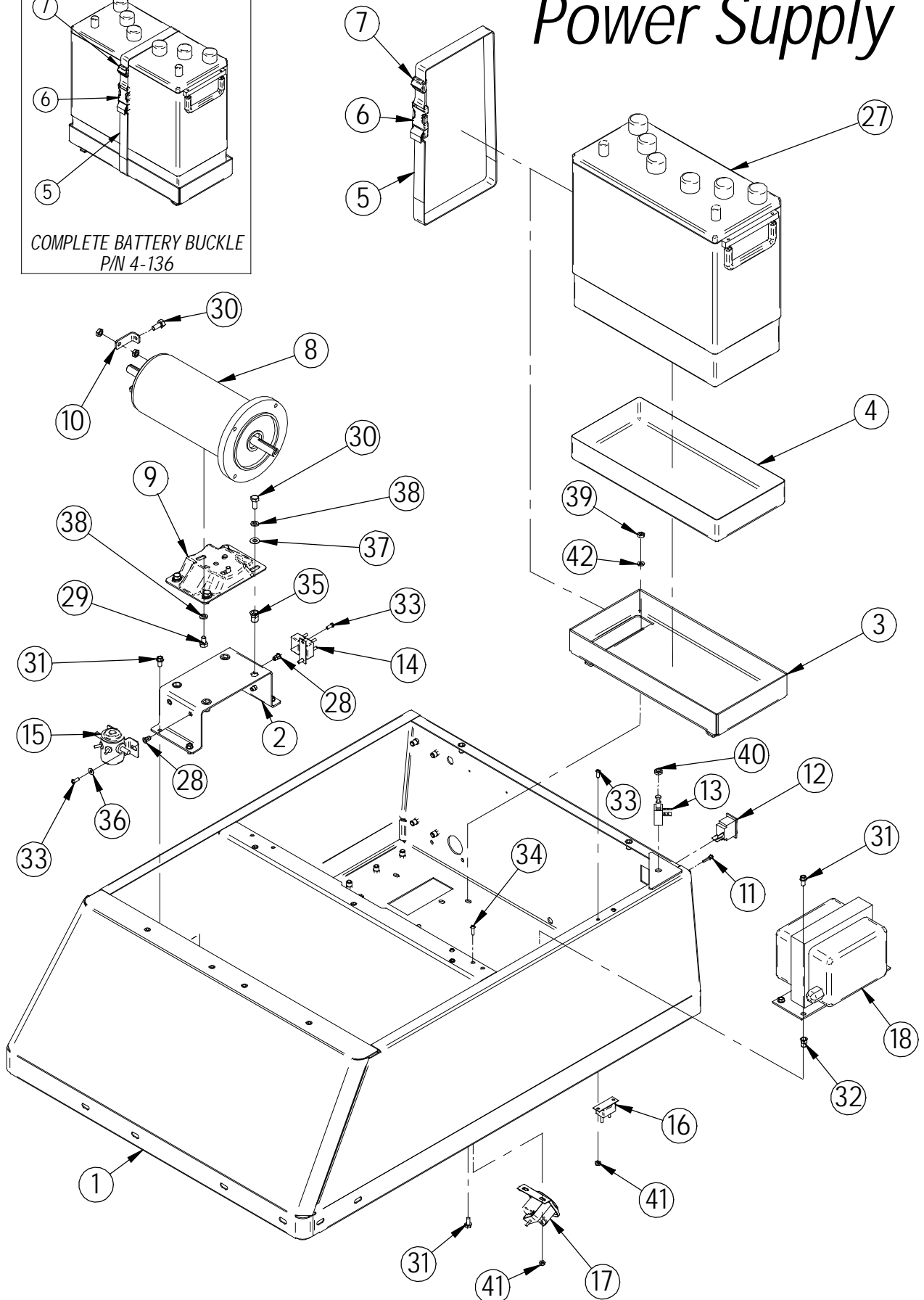
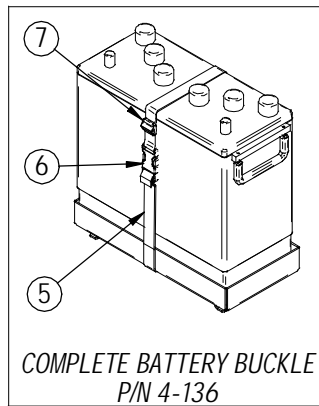
Item	Part No.	Description	Comments	Qty
1	4-111	MAIN BODY		1
2	4-113	R. INNER SIDE PANEL		1
3	4-302	BELT, 3V X 475		1
4	4-316	BROOM DRIVE PULLEY		1
5	4-317	IDLER PULLEY		1
6	4-318	IDLER PULLEY		1
7	4-319	TENSION SPRING		1
8	4-360	REVERSE IDLER ARM		1
9	4-366	BUSHING, IDLER ARM		1
10	4-376	BROOM LIFT LEVER		1
11	4-377	BROOM LIFT SHAFT		1
12	4-380	LIFT LEVER BASE, LT		1
13	4-382	ROTARY LINK BASE		1
14	4-385	LIFT LEVER COLLAR		1
15	4-386	LIFT LEVER SPRING		1
16	4-401US	MAIN BROOM		1
17	4-410	BROOM SUSP. ARM		1
18	4-410A	SET COLLAR		1
19	4-412	BROOM DRIVE BEARING	P/N 4-415 INCL. P/N 4-412 & P/N 4-416	1
20	4-416	BROOM LATERAL ARM	P/N 4-415 INCL. P/N 4-412 & P/N 4-416	1
21	4-420	BROOM DRIVER	INCLUDES: KEY, SET SCREWS, AND ROLL PINS	1
22	4-421	SUPPORT BLOCK		1
23	4-4230	3/4" X 1" X 1/2" FLG BEARING	P/N 4-423 INCL. P/N 4-423B-L, 4-423B-R & 4-4230	1
24	4-423B-L	SUPPORT BRACKET TABS	P/N 4-423 INCL. P/N 4-423B-L, 4-423B-R & 4-4230	1
25	4-423B-R	SUPPORT BRACKET TABS	P/N 4-423 INCL. P/N 4-423B-L, 4-423B-R & 4-4230	1
26	4-430	IDLER ARM	P/N 4-435 INCL. 4-430, 4-432, 4-432A, & HARDWARE	1
27	4-432	IDLER DRUM	P/N 4-435 INCL. 4-430, 4-432, 4-432A, & HARDWARE	1
28	4-432A	IDLER DRUM SPACER	P/N 4-435 INCL. 4-430, 4-432, 4-432A, & HARDWARE	1
29	4-436	ADJ. BROOM LIFT	P/N 4-449 INCL. ITEMS: 10,11,12,14,15,33,34,39,51,52 & HDWE	1
30	4-437	BROOM LONG LINK		1
31	4-438	BROOM ROTARY LINK		1
32	4-439	BROOM CRANK LINK		1
33	4-448	HANDLE GRIP		1
34	H-10436-0010	1/4" X 1 1/4" SPRING PIN		1
35	H-10436-0105	3/8" X 1 1/4" SPRING PIN		2
36	H-13103	HCS 3/8"-16 X 3/4"		2
37	H-13213	HB 1/2" X 2 1/2"		1
38	H-19901	FB CASHD 1/4"-20 X 1/2"		12
39	H-2250- 218	1/2" X 1" CLEVIS PIN		1
40	H-250HCN	HCN 1/4"-20		50
41	H-25283	SSS CP #10-32 X 1"		1
42	H-25328	SSS CP 1/4"-20 X 3/8"		3
43	H-25435	SSS CP 5/16" X 1/4"		1
44	H-26316	SB 5/16" X 3/4" SS		1
45	H-29570	FHP 1/4"-20 X 1"		2
46	H-33008	FW 3/8" SAE		4
47	H-33622	LW 3/8"		3
48	H-36106	HN 3/8"-16		1
49	H-37018	NYLOK 1/4"-20		2
50	H-37030	NYLOK 1/2"-13		1
51	H-45285	HITCH PIN CLIP 9		2
52	H-50102	FW 5/8 X 1 5/16"		1
53	H-65035	3/32" X 7/8" COTTER PIN		3
54	H-70001	HCS 1/4"-20 X 1/2 SS"		2
55	H-71063	LW 1/4" SS		2
56	H-K1432	3/16" X 1/2" KEY		1
57	H-ZCP154	3/8" X 1 1/2" CLEVIS PIN		1

Drive System



Item	Part No.	Description	Comments	Qty
1	4-111	MAIN BODY		1
2	4-113	R. INNER SIDE PANEL		1
3	4-120	REAR INNER PANEL, LT		1
4	4-125	MOTOR SUPT BRACKET		1
5	4-201	12V,TWIN SHAFT MOTOR		1
6	4-201B	MOTOR CRADLE		1
7	4-210	TERMINAL CLIP		1
8	4-301	MAIN DRIVE PULLEY		1
9	4-311	BELT, 4L260		1
10	4-312	TRANS INPUT PULLEY	P/N 4-375 INCL. COMPLETE TRANSMISSION ASSY	1
11	4-313	REAR WHEEL CAPSTAN		1
12	4-314	CLUTCH MTG BRACKET		1
13	4-320	BROOM DRIVE PULLEY		1
14	4-330	CLUTCH WHEEL ASSY	CLUTCH DONUT ORDERED SEPARATE IS P/N 4-332	1
15	4-340	BRAKE SHOE		1
16	4-350	DIFFERENTIAL AXLE		1
17	4-352	BEARING		4
18	4-353	REAR TIRE, STANDARD		2
19	4-354	DRIVE CHAIN W/ MASTER LINK		1
20	4-358	REAR TIRE, WIDE	(OPTIONAL)	2
21	4-362	TRANS. HOUSING		1
22	4-364A	FLANGE, 1.75" ID	P/N 4-364 INCLUDES SET OF 2	8
23	H-10436- 00135	3/8" X 4 1/2" CLEVIS PIN		1
24	H-13003	HCS 1/4"-20 X 3/4"		4
25	H-13051	HCS 5/16"- 18 X 1/2"		2
26	H-13053	HCS 5/16"-18 X 3/4"		16
27	H-15220	HB 1/2"-13 X 4 1/4"		1
28	H-19901	FB CASHD 1/4"-20 X 1/2"		18
29	H-250HCN	HCN 1/4"-20		50
30	H-25153	SSS CP #8-32 X 1/4 "		4
31	H-25435	SSS CP 5/16" X 1/4"		2
32	H-312HCN	HCN 5/16"-18		4
33	H-33080	FW 5/16" SAE		4
34	H-33620	LW 5/16"		16
35	H-36102	HN 1/4"-20		4
36	H-36104	HN 5/16"-18		12
37	H-36204	JN 5/16"- 18		4
38	H-37030	NYLOK 1/2"-13		1
39	H-65076	1/8" X 1" COTTER PIN		1
40	H-68015	SNAPRING 3/4"		2
41	H-71063	LW 1/4" SS		4
42	H-K14320	3/16" X 1 1/4" KEY		5
43	P50352	FW 17/32"		4

Power Supply



Item	Part No.	Description	Comments	Qty
1	4-111	MAIN BODY		1
2	4-125	MOTOR SUPT BRACKET		1
3	4-128	BATTERY TRAY		1
4	4-128A	BATTERY TRAY LINER		1
5	4-136A	1" HD BLACK WEBBING	P/N 4-136 INCL. 4-136A, 4-137, & 4-137A	1
6	4-137	BATTERY BUCKLE	P/N 4-136 INCL. 4-136A, 4-137, & 4-137A	1
7	4-137A	TRIGLIDE	P/N 4-136 INCL. 4-136A, 4-137, & 4-137A	1
8	4-201	12V,TWIN SHAFT MOTOR		1
9	4-201B	MOTOR CRADLE		1
10	4-210	TERMINAL CLIP		1
11	4-227	LOW BATTERY LIGHT		1
12	4-229	3 POS ROCKER SWITCH		1
13	4-231	SAFETY SHUT OFF SWITCH		1
14	4-232	CIR. BREAKER - 12V/80A		1
15	4-233	12V SOLENOID		1
16	4-235	CIR. BREAKER - 12V/6A		1
17	4-240	HOUR METER		1
18	4-244	BATTERY CHARGER		1
19	4-251	SUB-LEAD, BATTERY TO GREY 50 CONN.	NOT SHOWN	1
20	4-251N	SUB-LEAD, BATTERY TO GREY 50 CONN.	NOT SHOWN	1
21	4-252	SUB-HARNESS, GREY 50 TO 80 AMP BREAKER	NOT SHOWN	1
22	4-253	SUB-HARNESS, 80 AMP BREAKER TO SOLENOID	NOT SHOWN	1
23	4-254	SUB-LEAD, SOLENOID TO MAIN MOTOR	NOT SHOWN	1
24	4-255	SUB-HARNESS, MAIN WIRING HARNESS	NOT SHOWN	1
25	4-256	GREY 50 CONNECTOR WITH CONTACTS	NOT SHOWN	2
26	4-260	GREY 50 CONNECTOR, HOUSING ONLY	NOT SHOWN	2
27	4-270	BATTERY, 12 VOLT-135 AH		1
28	H-1032HCN	HCN #10-32		11
29	H-13051	HCS 5/16" - 18 X 1/2"		2
30	H-13053	HCS 5/16" -18 X 3/4"		5
31	H-19901	FB CASHD 1/4"-20 X 1/2"		12
32	H-250HCN	HCN 1/4"-20		50
33	H-29048	RPH #10-32 X 1/2"		6
34	H-29055	RPH #10-32 X 5/8"		2
35	H-312HCN	HCN 5/16"-18		4
36	H-33074	FW #10 SAE		2
37	H-33080	FW 5/16" SAE		4
38	H-33620	LW 5/16"		6
39	H-36102	HN 1/4"-20		4
40	H-36106	HN 3/8"-16		1
41	H-37015	NYLOK #10-32		4
42	H-71063	LW 1/4" SS		4

SWEEPER MAINTENANCE RECORDS

Operator's Name: _____

Week Of: _____

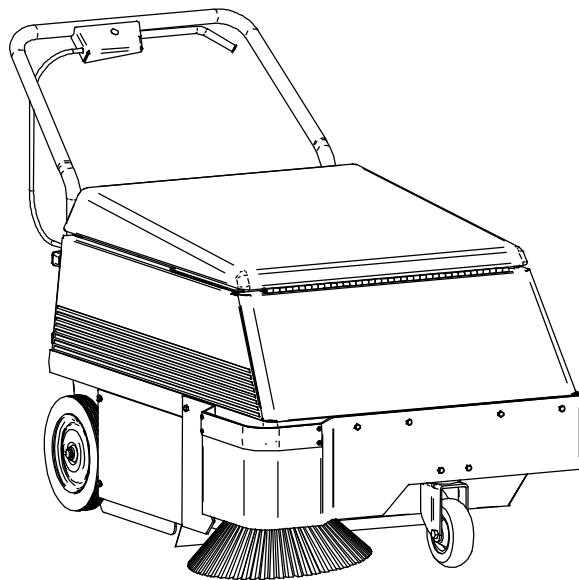
Maintenance Item	Monday	Tuesday	Wednesday	Thursday	Friday
Daily					
Park Machine with Brooms Up					
Shake Filter with Crank					
Remove and Empty Hopper					
Open Hood					
Plug In Charger to 110V Outlet					
Clean Machine with "Pledge" and Cloth					
Check Main Broom for Debris					
Weekly					
Check Battery Water Level					
Inspect Floor Seals					
Check Clutch Adjustment					
Inspect Main and Side Brooms					
Monthly					
Lubricate the Front Caster					
Remove Main Broom and Inspect					
Check Wiring Connections					
Inspect Battery Terminals					
Shake Filter with Crank for 1 minute					
Annual					
Install "Wear Pack"					
Inspect the Belt Tension Spring					

Supervisor: _____

Call 1 (800) 634-4060 for assistance



STANDARD WARRANTY POLICY



Eighteen (18) Months Coverage

PARTS: Replacement parts will be supplied free for **18 months or 750 hours** from date of delivery to customer. This parts warranty includes all parts on the machine except normal wear parts. These exceptions are:

1. The brooms (main and side).
2. The neoprene floor and hopper seals.
3. The filter-cleaning crank's safety pin (which is a fail-safe device).
4. The side-broom fuse (on units so equipped).
5. The two rubber drive belts.

LABOR: 3 Months from date of delivery to customer.

TRAVEL: 1 Month from date of delivery to customer.

Abuse and deliberate misuse are not covered. Warranty is granted at the entire option of manufacturer.



RPS-A13-Rev1298



For machines after Serial No. "BY-2220" with Side Broom Circuit Breaker

- B = Battery (12 Volt)
 R1 = Main Relay
 M1 = Main Broom Motor
 M2 = Side Broom Motor
 F1 = Side Broom Circuit Breaker (6 Amp)
 F2 = Main Circuit Breaker (80 Amp)
 S1 = Safety Switch
 S2 = Master Switch
 S3 = Side Broom Switch
 H = Hour Meter
 C = Battery Charger
 G = Grey 50 Connector
 P = Plug: Side Broom Harness
-
- Wire: (R) = Red
 (W) = White
 (B) = Black
 (B1) = Blue

For machines after Serial No. "CI-3200" with
Single Electrical Switch for Main and Side Brooms

- B = Battery (12 Volt)
 R1 = Main Relay
 M1 = Main Broom Motor
 M2 = Side Broom Motor
 F1 = Side Broom Circuit Breaker (6 Amp)
 F2 = Main Circuit Breaker (80 Amp)
 S1 = Safety Switch
 S2 = Main and Side Broom Switch
 H = Hour Meter
 C = Battery Charger
 G = Grey 50 Connector
 P = Plug: Side Broom Harness
 L = Warning Light Unit
-
- Wire: (R) = Red
 (W) = White
 (B) = Black
 (B1) = Blue