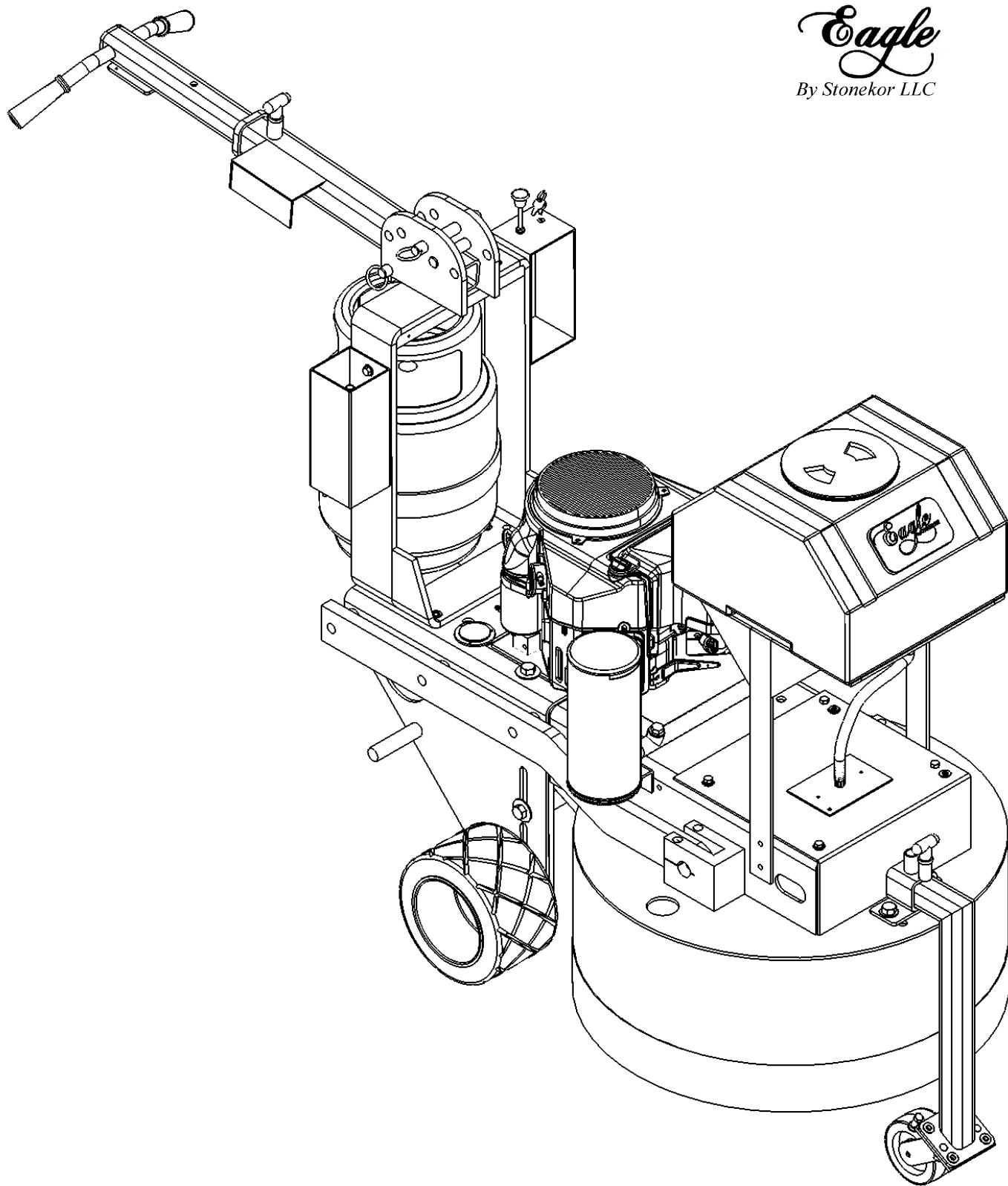


GP ONE SPLIT DECK

Eagle
By Stonekor LLC





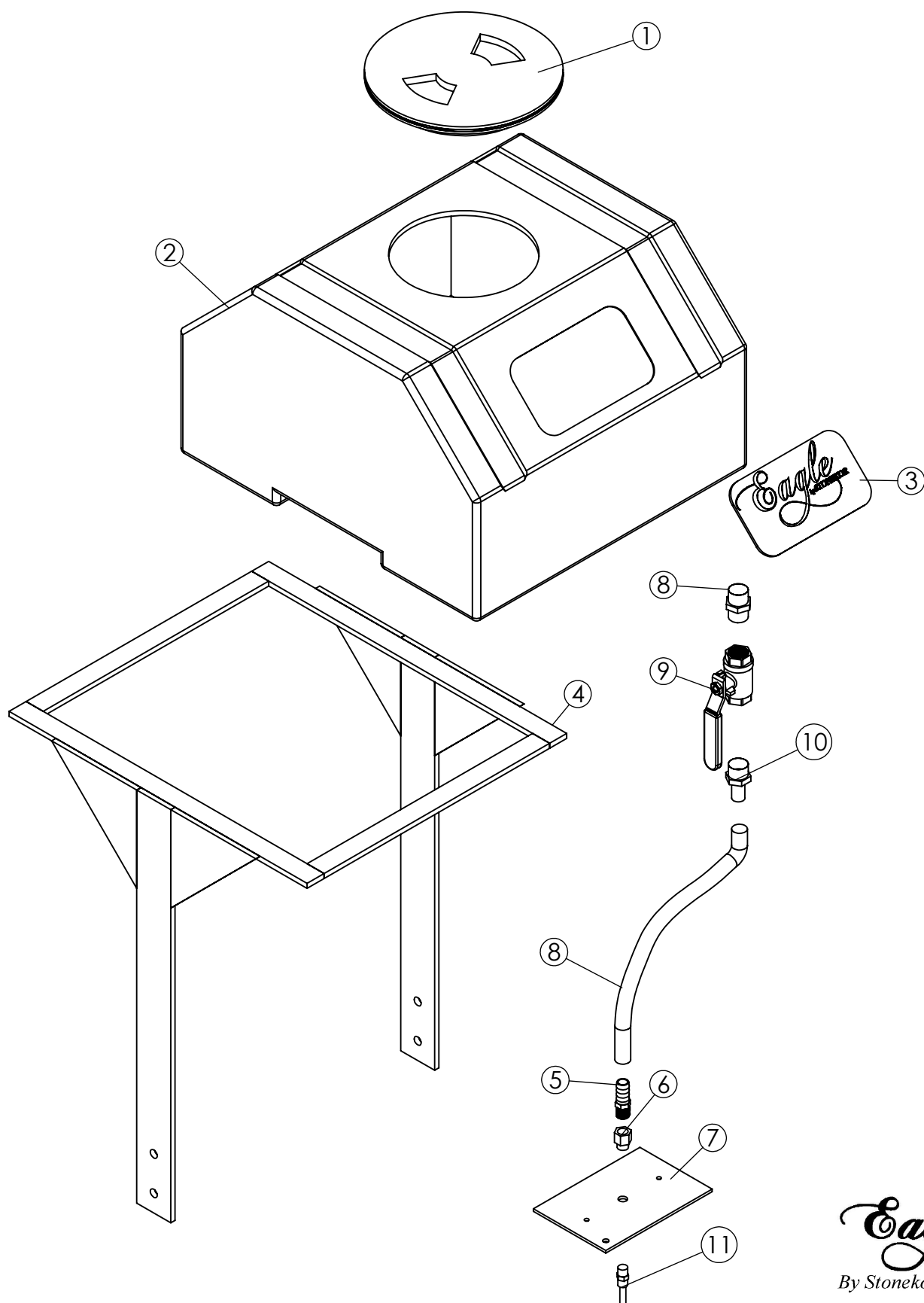
G & P ONE GRINER SPLIT DECK SUB ASSEMBLY PARTS BREAK DOWN

ITEM NO.	PART NUMBER	DESCRIPTION	QTY.
1	200171	TRANSPORT WHEEL SUPPORT ARM	1
2	200161	AXLE MAIN WHEEL	2
3	200160	WHEEL 5 X 10	2
4	1010	HANDLE GRIP	2
5	200150-A	FRAME ENGINE PLATFORM	1
6	200164	T-NUT 5/8 - 11 FINE	4
7	200119	HANDLE PIN	2
8	200170	TRANSPORT RECEIVER	1
9	200156	SPLASH GUARD	1
10	300171	KEY SWITCH	1
11	680082	REPLACEMENT KEY	1
12	680255	CHOKE CABLE PUSH / PULL (KAWASAKI / ROBIN)	1
13	200111	HOUR METER	1
14	200152	INSPECTION COVERS	1
15	200113	HOSE TUBE	1
16	200151	FRAME FRONT PULLEY COVER	1
17	681078	QUICK PIN	1
18	850120	NUT, HEX 1-14, SLOTTED	2
19	850180	COTTER PIN	2
20	200888	3/8 Split Lock Washer Zinc	5
21	200887	3/8 SAE Flat Washer	33
22	200827	5/8 USS Flat Washer	6
23	200803	3/8 USS Flat Washer	2
24	200800	3/8-16 x 1 Hex Cap Screw	10

G & P ONE GRINER SPLIT DECK SUB ASSEMBLY PARTS BREAK DOWN

ITEM NO.	PART NUMBER	DESCRIPTION	QTY.
25	200801	3/8-16 x 1-1/2 Hex Cap Screw	7
26	200823	5/8-11 x 6 Tap Bolt Gr 8	2
27	200804	3/8-16 Nylon Insert L/N	11
28	200813	5/8 SAE Flat Washer	2
29	200839	1 SAE Flat Washer	4
30	200819	5/8-11 x 2-1/2 Tap Bolt	4
31	200844	3/8-16 x 1-1/4 Hex Cap Screw	4
32	200889	5/8-18 x 1-3/4 Hex head Cap Screw	2
33	200815	5/8-18 Nylon Insert L/N	2
34	200323	TRANSPORT WHEEL 1700	1
35	200162	SPACER 1/2 X 5/8	1
36	200391	HANDLE ASSEMBLY SP 30 LX	1

GP ONE SPLIT DECK WATER SYSTEM



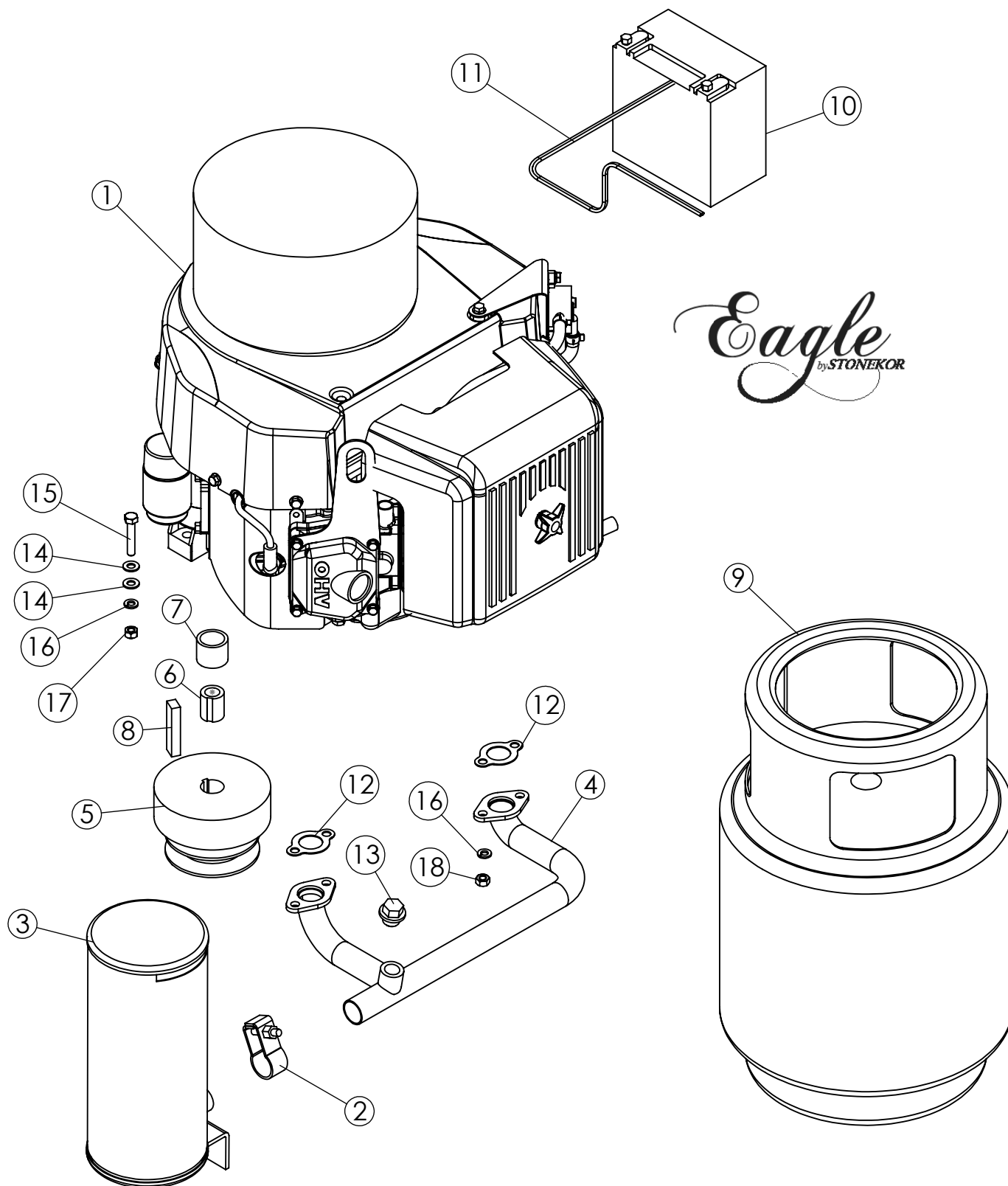
Eagle
By Stonekor LLC

GP ONE SPLIT DECK WATER SYSTEM

ITEM NO.	PART NUMBER	DESCRIPTION	QTY.
1	200445	CAP ASSEMBLY WATER TANK	1
2	200442	WATER TANK 2012	1
3	300178	DECAL	1
4	200443	WATER TANK BRACKET	1
5	200451	HOSE BARB 1/2" TO 1/4" PIPE	1
6	200452	1/4" FEMALE TO 1/8" PIPE	1
7	300252	BATTERY BOX PLATE	1
8	200192	1/2" PIPE NIPPLE 1.25 LONG	1
9	200191	BALL VALVE 1/2"	1
10	200194	1/2 HOSE BARB TO MALE 1/2 THREADS	1
11	200453	COMPRESSION CONN	1

Eagle
By Stonekor LLC

ROBIN 22 HP EXHAUST SYSTEM

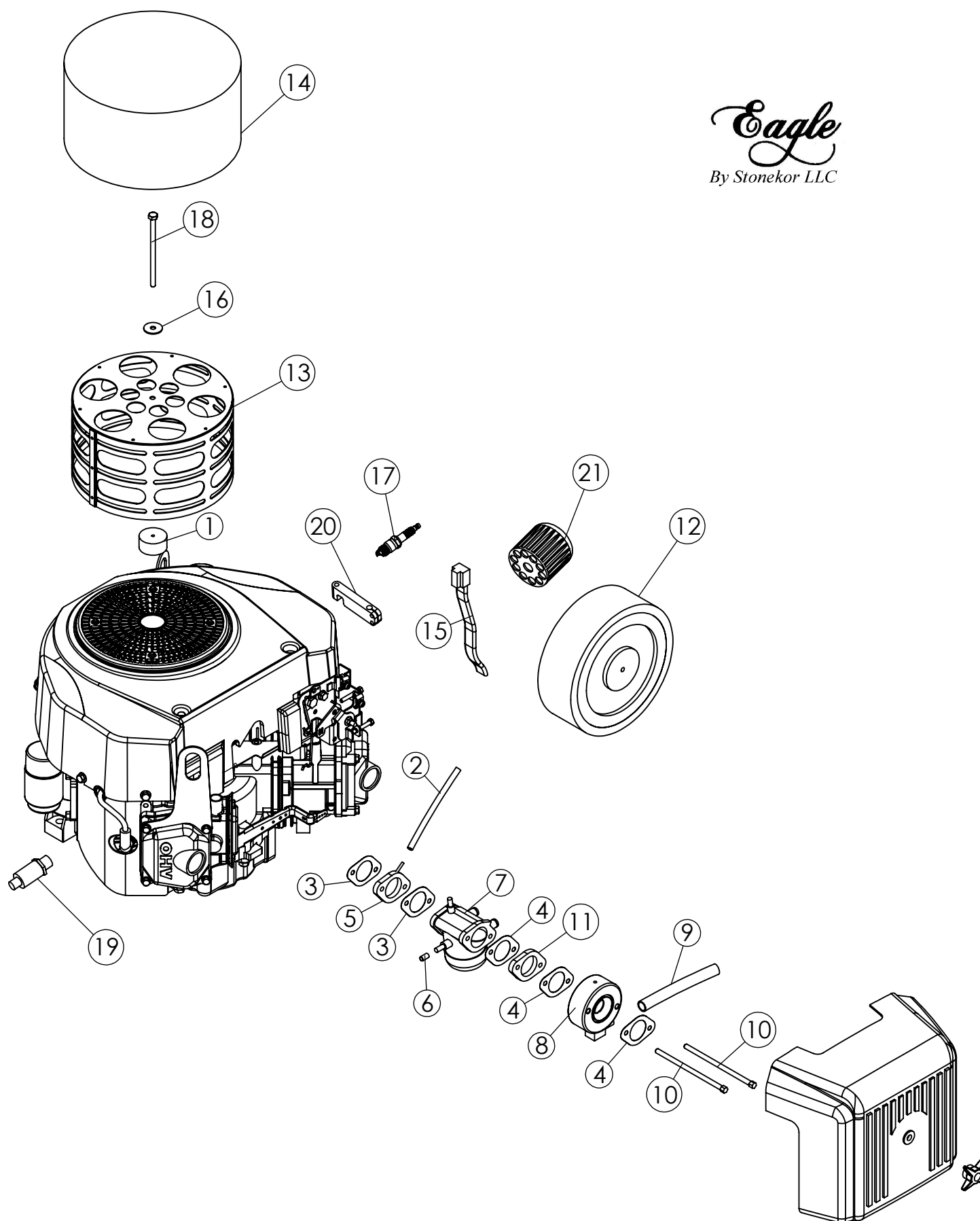


ROBIN 22 HP EXHAUST SYSTEM

ITEM NO.	PART NUMBER	DESCRIPTION	QTY.
1	300146	ROBIN 22 HP COMPLETE WITHOUT MUFFLER & MANIFOLD	1
2	300187	CLAMP MUFFLER ROBIN	1
3	300147	VERTICAL MUFFLER	1
4	300148	MANIFOLD ROBIN VERTICAL	1
5	200142	CLUTCH	1
6	200154	SHAFT EXTENSION ROBIN	1
7	200146	SPACER, CLUTCH	1
8	200155	KEY STOCK	1
9	680053	LP TANK (ALUM)	1
10	4002	BATTERY SM 12V	1
11	200124	BATTERY CABLE ASSY	1
12	R2463520103	GASKET, MANIFOLD	2
13	680680	MANIFOLD BOLT PLUG	1
14	200832	5/16 SAE Flat Washer	7
15	200858	5/16-18 x 1-3/4 Hex Cap Screw	4
16	200885	5/16 Split Lock Washer	6
17	200822	5/16-18 Nylon Insert L/N	4
18	200905	8MM x 1.25 Hex Nut	4

ROBIN 22 HP ENGINE AND CARBURETOR

Eagle
By Stonekor LLC



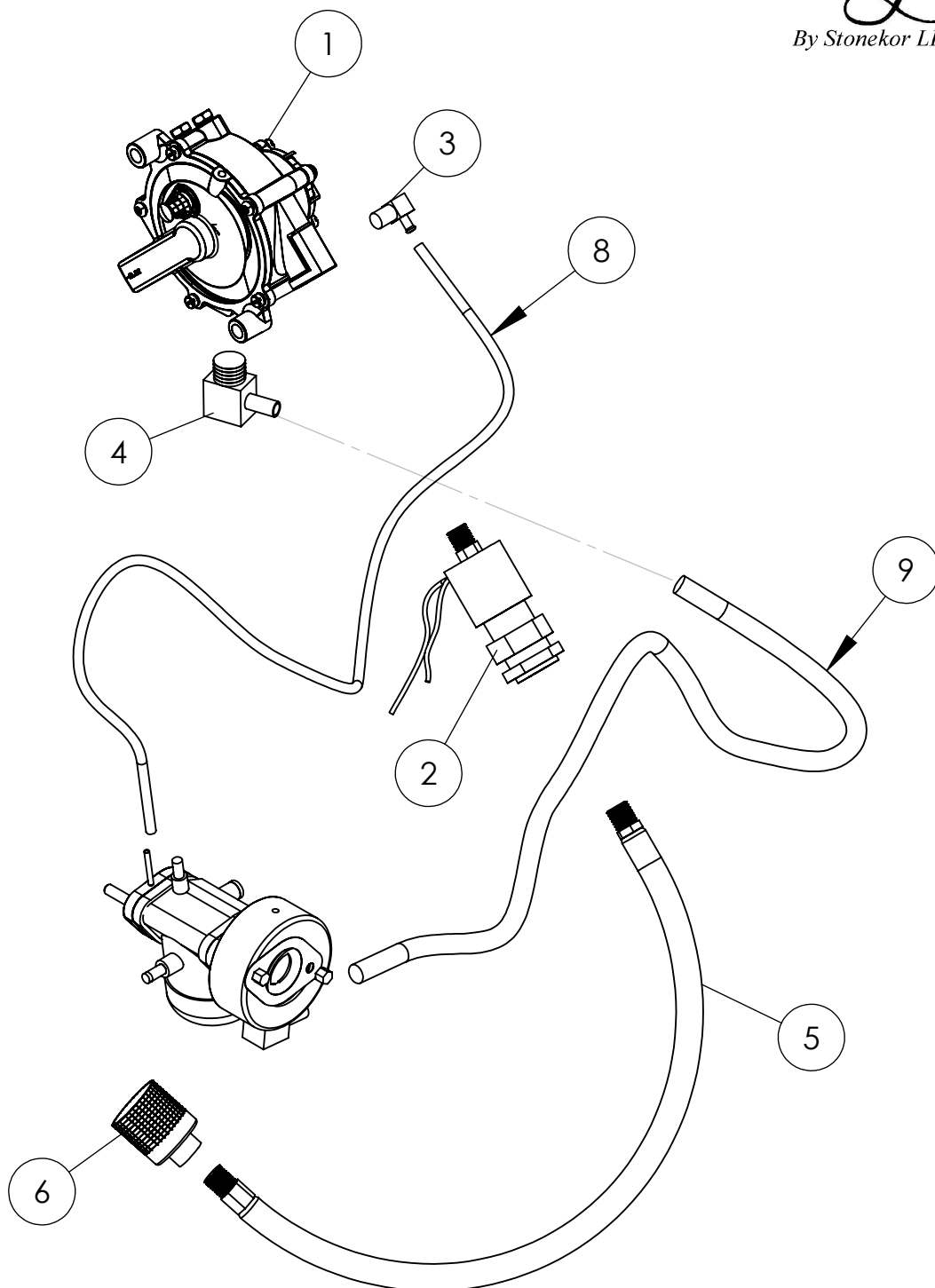
ROBIN 22 HP ENGINE AND CARBURETOR

ITEM NO.	PART NUMBER	DESCRIPTION	QTY.
1	200128	RECOIL SUPPORT FOR STUD	1
2	1117	HOSE 3' VAC	1
3	R26335501A3	INSULATOR GASKET	2
4	R26335502A3	AIR CLEANER GASKET	3
5	R26335401A3	INSULATOR WITH VACUUM TUBE	1
6	680235	RUBBER CAP 1/4-KAWASAKI	1
7		CARBURETOR ASSEMBLY ROBIN 22 HP	1
8	680553	ROBIN 22 HP FUEL LOAD BLOCK	1
9	1118	HOSE 3' FUEL	1
10	680229	STUD M6 X 130 KAWASAKI	2
11	R26338001A3	SPACER	1
12	26332610A1	CLEANER ELEMENT	1
13	300203	FILTER SUPPORT SCREEN ROBIN	1
14	680509	RECOIL FILTER ROBIN	1
15	R26373123A1	WIRING HARNESS SK SERIES GRINDERS ONLY	1
16	200828	1/4 x 1 fender Washer	1
17	RX650140730	PLUG SPARK RCJ8Y, SOLID (KAWASAKI FH541 V)	1
18	200876	1/4-20 X 4 1/2 Hex Cap Screw	1
19	300202	VALVE OIL DRAIN	1
20	300218	THROTTLE CABLE BRACKET G&P ONE ONLY	1
21	2486580100	OIL FILTER AY	1

Eagle
By Stonekor LLC

REGULATOR ELECTRIC LOCK FITTING HOSE COUPLER

Eagle
By Stonekor LLC

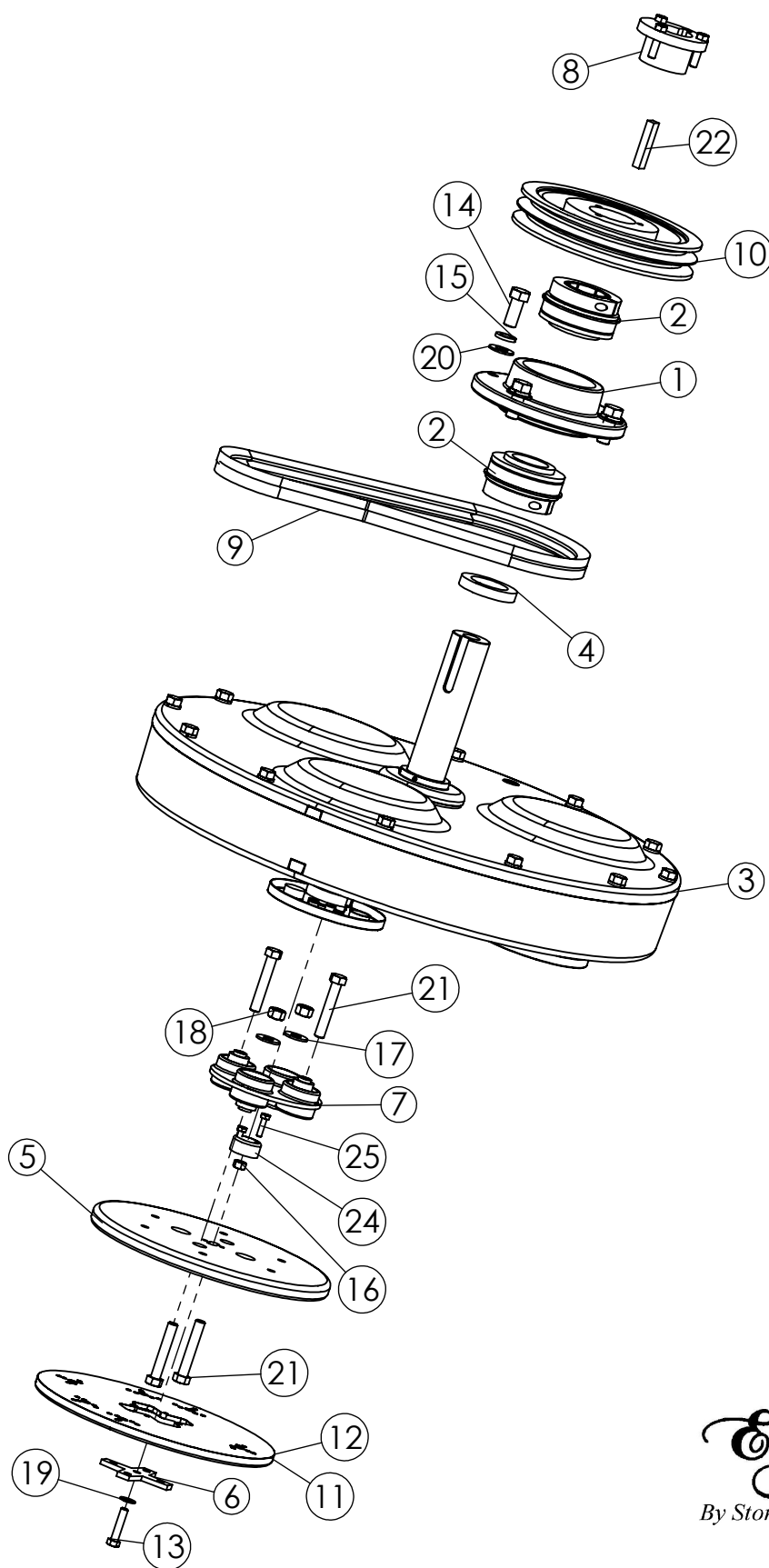


REGULATOR ELECTRIC LOCK FITTING HOSE COUPLER

ITEM NO.	PART NUMBER	DESCRIPTION	QTY.
1	680350	REGULATOR FOR KAWASAKI & ROBIN	1
2	680265	FUEL LOCK WITH FILTER	1
3	1144	1/8 MALE PIPE X 3/16 HOSE BARB X 90	1
4	1143	BRASS ELBOW 3/8 X 3/8 NPT	1
5	1124	HOSE, LP TANK TO REGULATOR	1
6	1155	QUICK COUPLING	1
8	1117	HOSE, 3' VAC	1
9	1118	HOSE, 3' FUEL	1
.	300160	REGULATOR ELECT. LOCK FITTING COMPLETE	

Eagle
By Stonekor LLC

G AND P ONE GEAR BOX SUB ASSEMBLY



Eagle
By Stonekor LLC

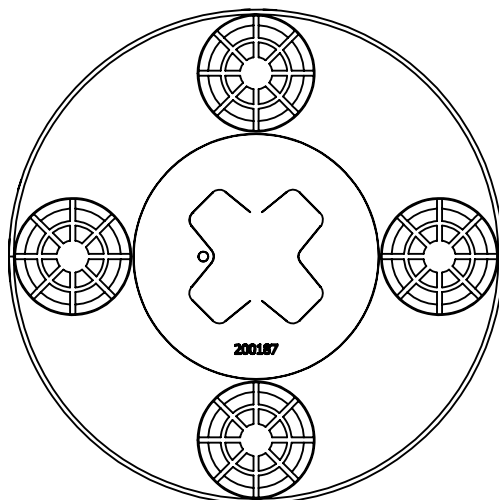
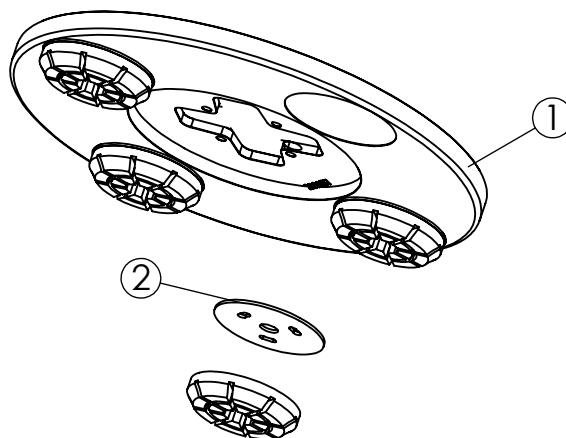
G AND P ONE GEAR BOX SUB ASSEMBLY

ITEM NO.	PART NUMBER	DESCRIPTION	QTY.
1	200184	BEARING HOUSING GEAR BOX	1
2	200181	BEARING	2
3	200175	GEAR BOX	1
4	200186	SPACER, GEAR BOX 1/2" X 3" ALUM	1
5	200178	DRIVE PLATE 13	1
6	200185	4 LEAF CLOVER	1
7	200177	MOR FLEX 602	1
8	200183	SDS BUSHING	1
9	200352	BELT BX-52	2
10	200182	PULLEY 9.4 DOUBLE	1
11	200187	DIAMOND PLATE 13" RESIN WITH VELCRO	3
12	200179	DIAMOND PLATE 13" ALUMINUM METAL BONDS	3
13	200802	3/8-16 x 1-3/4 Hex Cap Screw	1
14	200811	5/8-18 x 1-1/2 Hex head Cap Screw	4
15	200826	5/8 Split Lock Washer	4
16	200804	3/8-16 Nylon Insert L/N	1
17	200808	1/2 USS Flat Washer	2
18	200907	1/2-13 Nylon Insert L/N	2
19	200887	FLAT WASHER 3/8 SAE	1
20	200813	5/8 SAE Flat Washer	4
21	200807	1/2-13 x 3 Hex Cap Screw	4
22		KEY STOCK	3
24	200118	BOLT COVER DRIVE PLATE	1
25	200909	1/4-20 X 1 Hex Cap Screw	2

Eagle
By Stonekor LLC

G & P ONE GRINDER RESIN BOND

Eagle
by **STONEKOR**



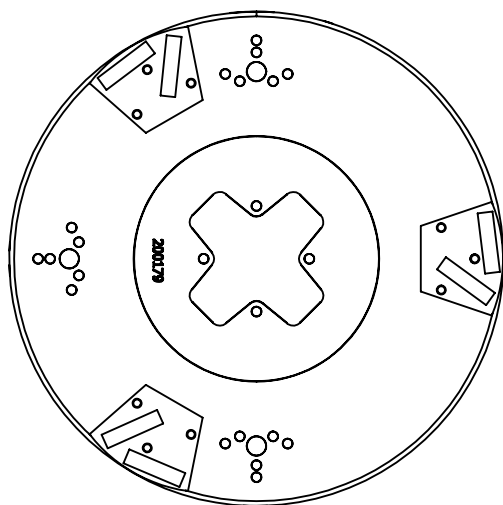
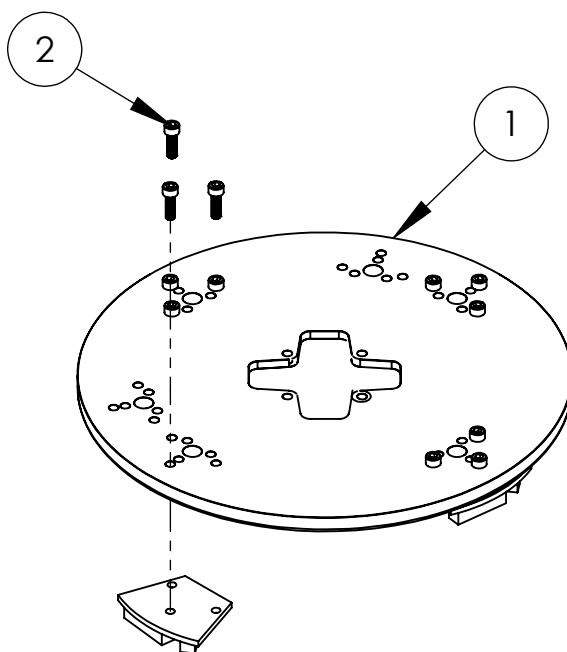
FOUR RESIN PADS

G & P ONE GRINDER RESIN BOND

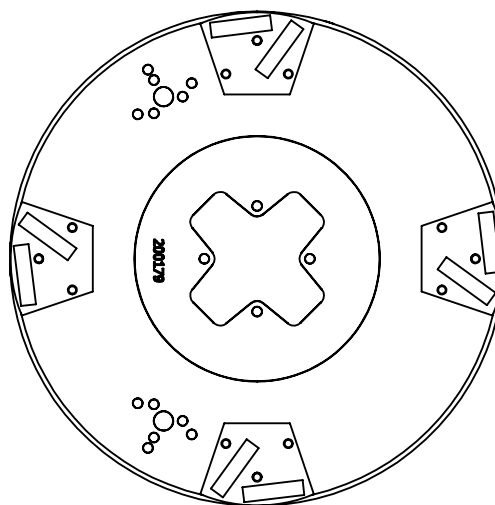
ITEM NO.	PART NUMBER	DESCRIPTION	QTY.
1	200187	DIAMOND PLATE 13" RESIN WITH VELCRO	
2	200180	VELCRO BACKING RING	4

G & P ONE GRINDER COATING REMOVAL

Eagle
by **STONEKOR**



THREE AGGRESSIVE COATING
REMOVAL PADS



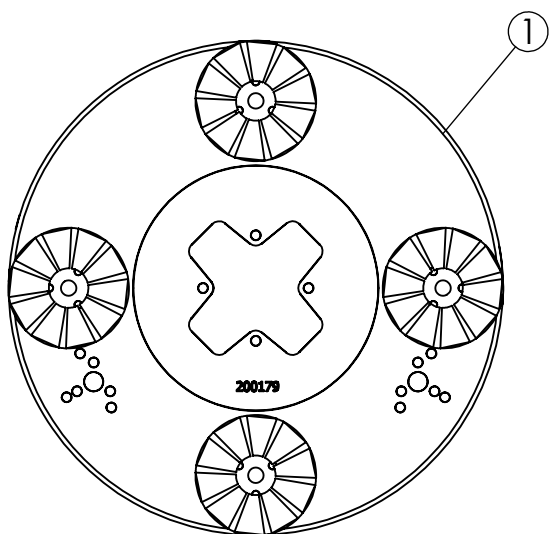
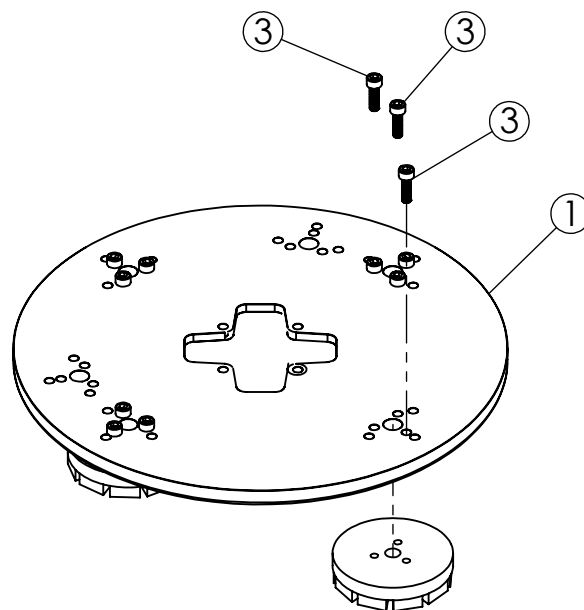
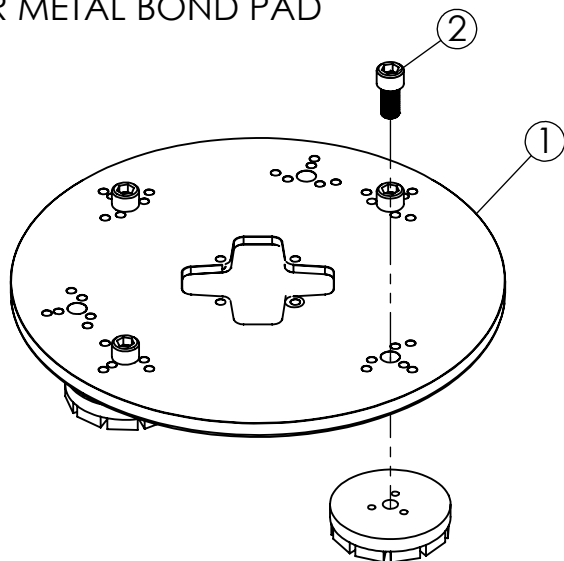
FOUR AGGRESSIVE COATING
REMOVAL PADS

G & P ONE GRINDER COATING REMOVAL

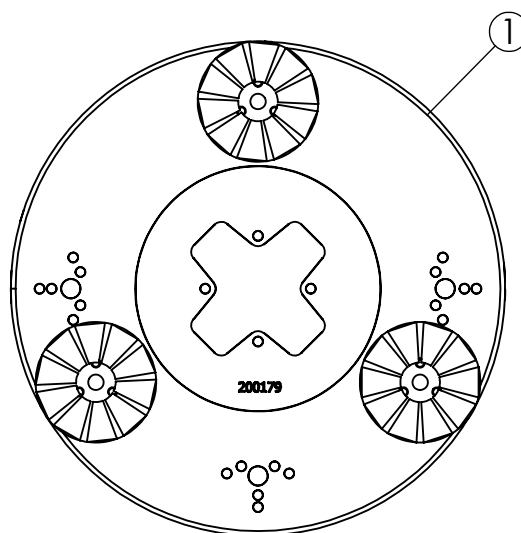
ITEM NO.	PART NUMBER	DESCRIPTION	QTY.
1	200179	DIAMOND PLATE 13" ALUMINUM METAL BONDS	
2	200855	M6 X 1 X 20 Socket Head Cap Screw	12

G & P ONE GRINDER METAL BOND

OPTIONAL SINGLE SCREW
PER METAL BOND PAD



FOUR METAL BOND PADS

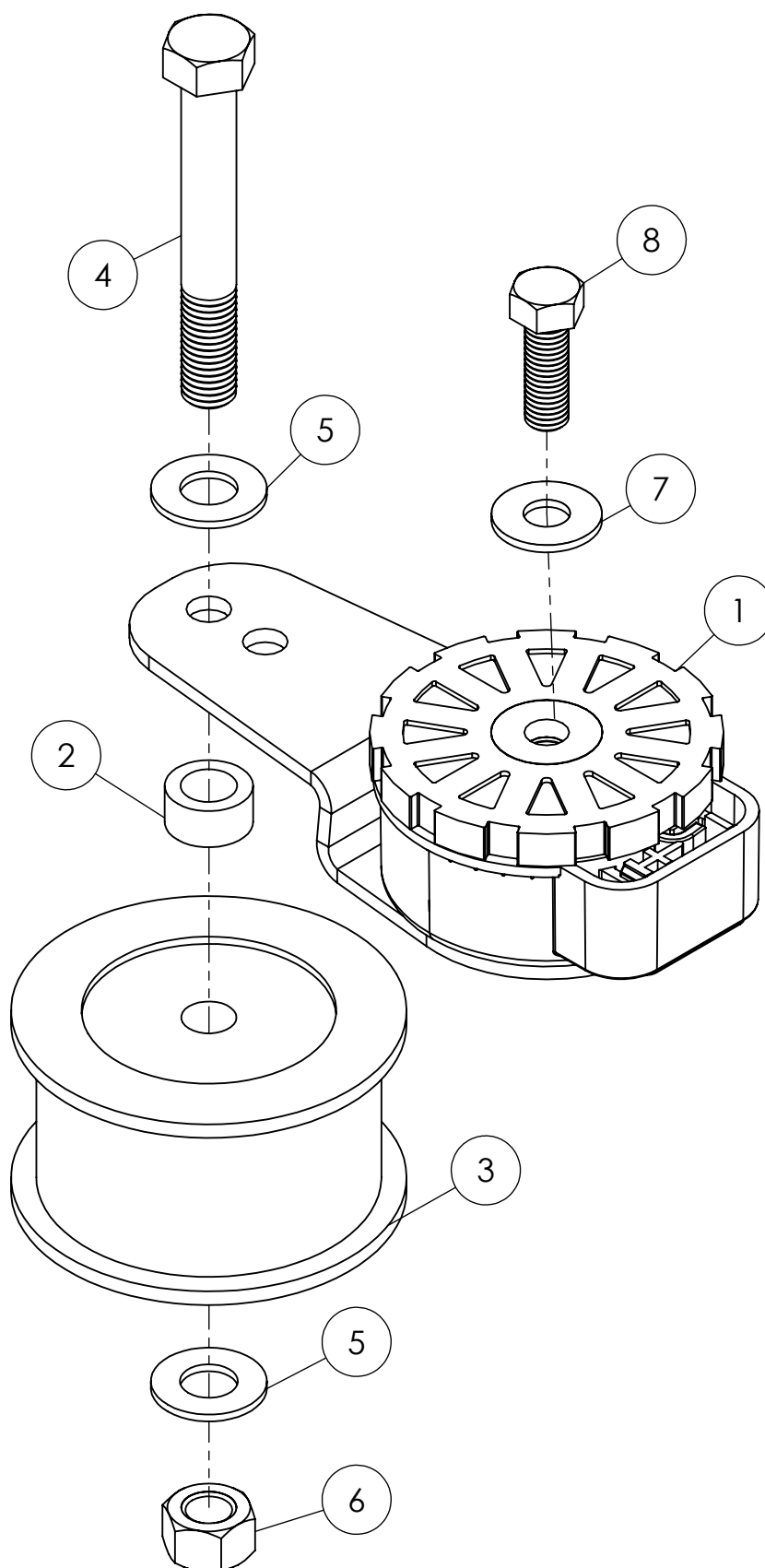


THREE METAL BOND PADS

Eagle
by STONEKOR

G & P ONE GRINDER METAL BOND

ITEM NO.	PART NUMBER	DESCRIPTION	QTY.
1	200179	DIAMOND PLATE 13" ALUMINUM METAL BONDS	1
2	200913	Socket Head Cap Screw M12 x 1.75 x 20	4
3	200855	Socket Head Cap Screw M6 x 1.0 x 20	12

TENSIONER ASSEMBLY G AND P ONE

Eagle
By Stonekor LLC

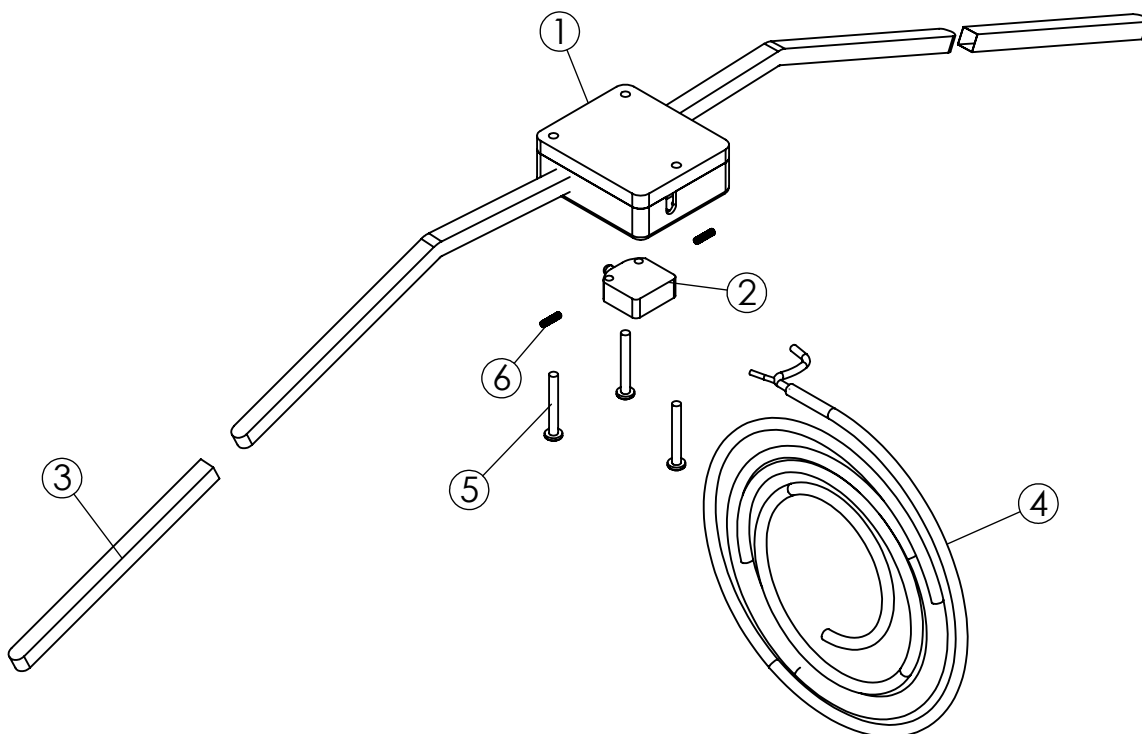
TENSIONER ASSEMBLY G AND P ONE

ITEM NO.	PART NUMBER	DESCRIPTION	QTY.
1	200143	TENSIONER	1
2	200162	SPACER 1/2 X 5/8	1
3	200144	IDLER PULLEY	1
4	200825	5/8-11 X 4-1/2 HEX CAP SCREW	1
5	200813	5/8 SAE Flat Washer	2
6	200814	5/8-11 Nylon Insert L/N	1
7	200808	1/2 USS Flat Washer	1
8	200806	1/2-13 X 1-1/2 HEX CAP SCREW	1
.	200120	TENSIONER ASSEMBLY G AND P ONE COMPLETE	

Eagle
By Stonekor LLC

KILL SWITCH GRINDER ONLY

Eagle
By Stonekor LLC

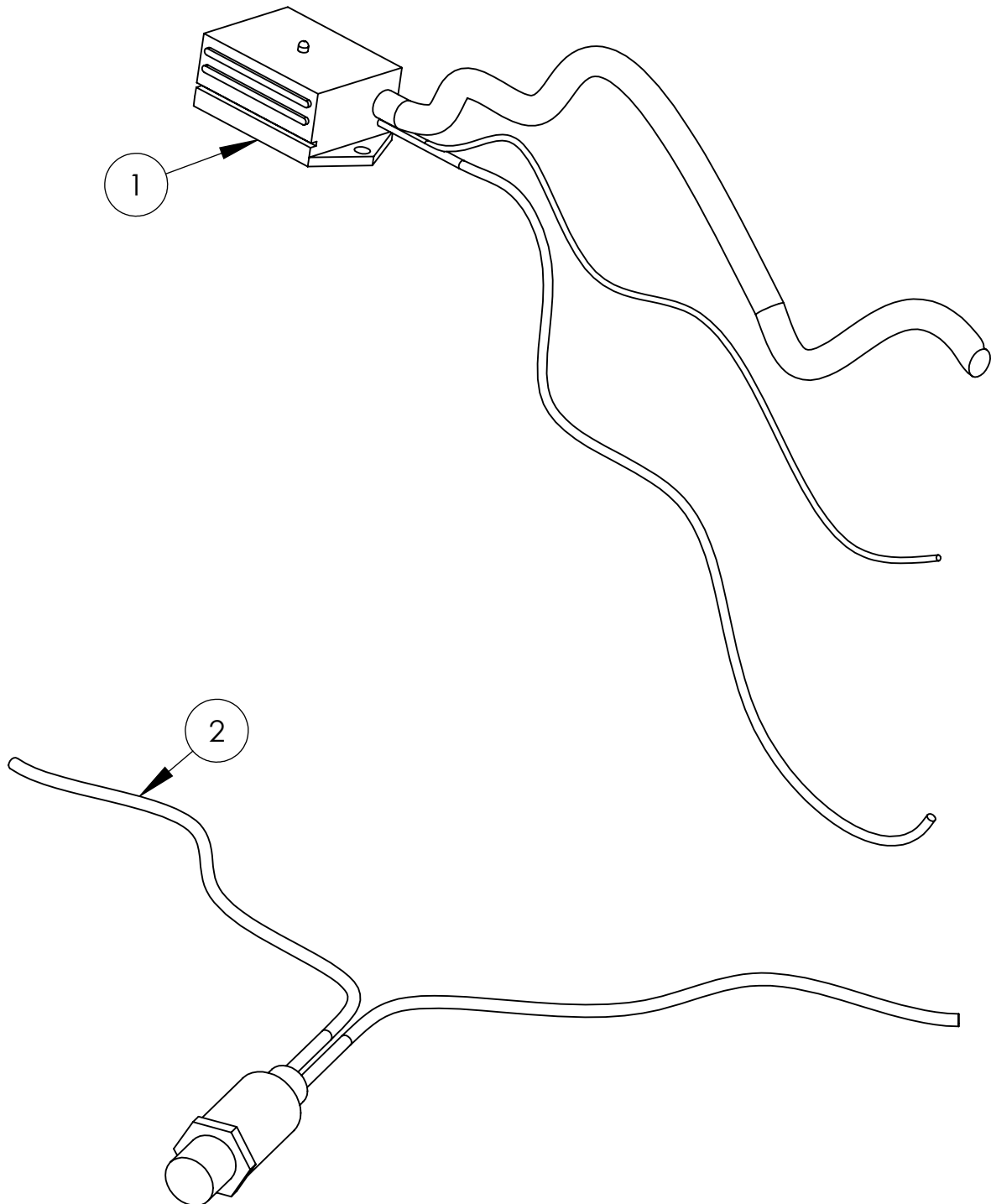


KILL SWITCH GRINDER ONLY

ITEM NO.	PART NUMBER	DESCRIPTION	QTY.
1	200103	KILL SWITCH HOUSING WITH ARMS ONLY	1
2	300163	SWITCH, KILL ONLY	1
3	200108	KILL SWITCH GRIPS	2
4	200106	KILL SWITCH CABLE	1
5	200915	10-32 x 1-1/2 Phillips Pan Head Machine Screw Zinc	3
6	200105	SPRING	2
.	200130	KILL SWITCH ASSEMBLY GRINDER ONLY COMPLETE	

Eagle
By Stonekor LLC

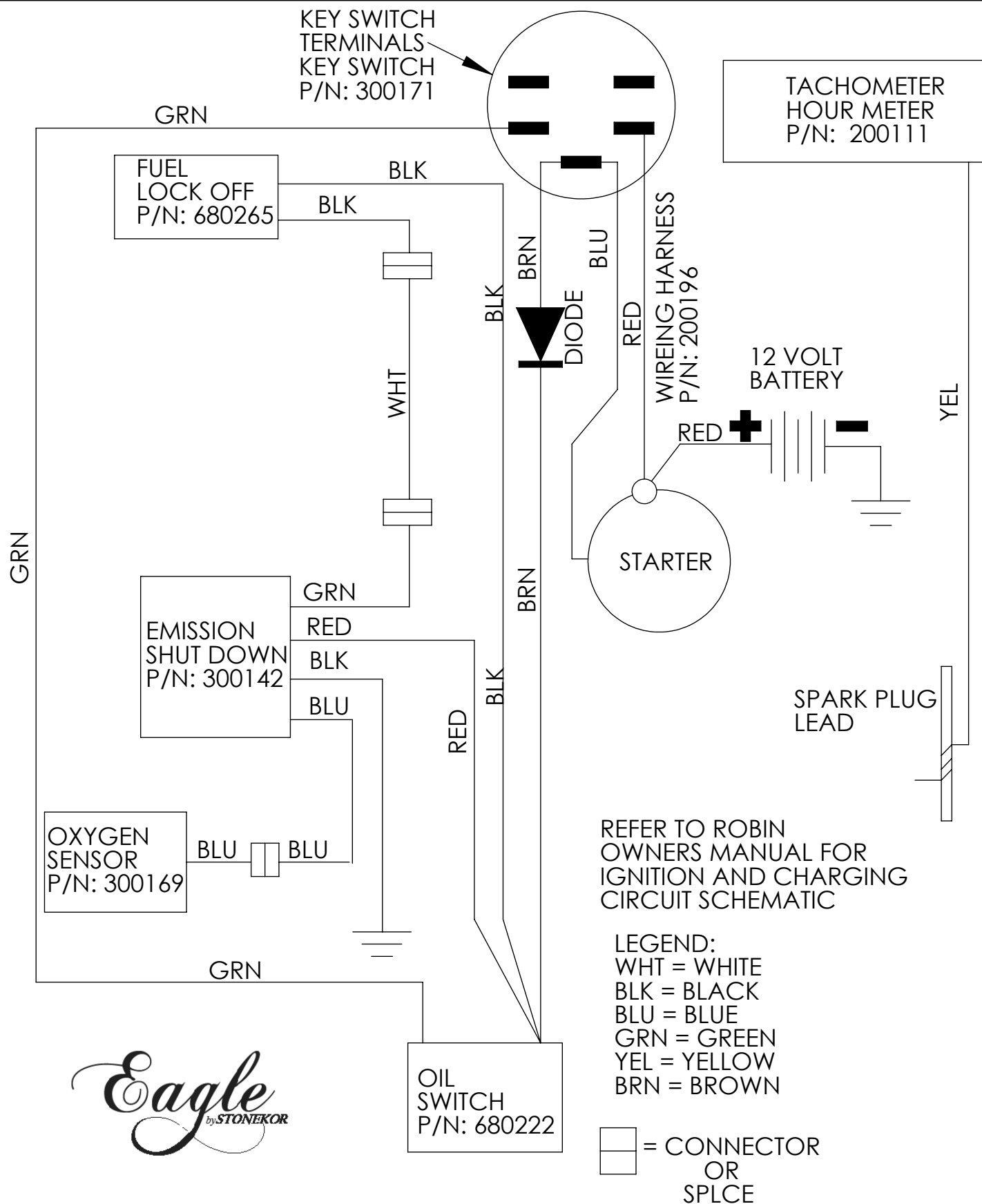
EMISSION SHUT DOWN



EMISSION SHUT DOWN

ITEM NO.	PART NUMBER	DESCRIPTION	QTY.
1	300142	EMISSION SHUT DOWN COMPLETE	1
2	300169	OXYGEN SENSOR ONLY	1
.	300139	EMISSION SHUT DOWN COMPLETE	1

WIRE HARNESS SCHEMATIC ROBIN 22 HP - G & P ONE / EDGEWINDER WITH OPTIONAL EMISSION SHUT DOWN



Eagle
by **STONEKOR**